

Product datasheet for **TP311147M**

YPEL4 (NM_145008) Human Recombinant Protein

Product data:

Product Type: Recombinant Proteins

Description: Recombinant protein of human yippee-like 4 (Drosophila) (YPEL4), 100 µg

Species: Human

Expression Host: HEK293T

**Expression cDNA Clone
or AA Sequence:** >RC211147 protein sequence
Red=Cloning site **Green**=Tags(s)

MPSCDPGPGPAACLPTKTRFRSYLPRCHRITYSCVHCRAHLAKHDELISKSFQGS HGRAYLFNSVWNVGCGPA
EQRLLLTGLHSVADIFCESCKTTLGWKYEQAFETSQKYKEGKYIEMSHMVKDNWD

TRTRPLEQKLISEEDLAANDILDYKDDDDKV

Tag: C-Myc/DDK

Predicted MW: 14.1 kDa

Concentration: >0.05 µg/µL as determined by microplate BCA method

Purity: > 80% as determined by SDS-PAGE and Coomassie blue staining

Buffer: 25 mM Tris-HCl, 100 mM glycine, pH 7.3, 10% glycerol

Preparation: Recombinant protein was captured through anti-DDK affinity column followed by conventional chromatography steps.

Note: For testing in cell culture applications, please filter before use. Note that you may experience some loss of protein during the filtration process.

Storage: Store at -80°C.

Stability: Stable for 12 months from the date of receipt of the product under proper storage and handling conditions. Avoid repeated freeze-thaw cycles.

RefSeq: [NP_659445](#)

Locus ID: 219539

UniProt ID: [Q96NS1](#), [A0A024R4Y8](#)

RefSeq Size: 1731

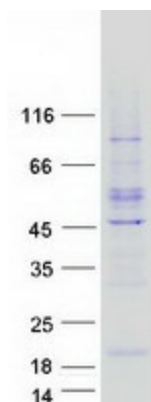
Cytogenetics: 11q12.1



[View online »](#)

RefSeq ORF: 381

Product images:



Coomassie blue staining of purified YPEL4 protein (Cat# [TP311147]). The protein was produced from HEK293T cells transfected with YPEL4 cDNA clone (Cat# [RC211147]) using MegaTran 2.0 (Cat# [TT210002]).