

Product datasheet for TP311147L

YPEL4 (NM_145008) Human Recombinant Protein

Product data:

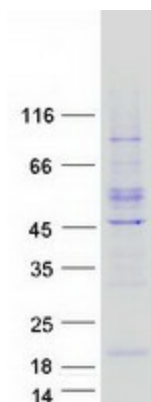
| | |
|---------------------------------------|------------------------------------------------------------------------------------------------------------------------------------------------------|
| Product Type: | Recombinant Proteins |
| Description: | Recombinant protein of human yippee-like 4 (Drosophila) (YPEL4), 1 mg |
| Species: | Human |
| Expression Host: | HEK293T |
| Expression cDNA Clone or AA Sequence: | >RC211147 protein sequence Red =Cloning site Green =Tags(s) |
| | MPSCDPGPGPAACLPTKTRFRSYLPRCHRITYSCVHCRAHLAKHDELISKSFQGS HGRAYLFNSVWNVGCGPA EQRLLLTGLHSVADIFCESCKTTLGWKYEQAFETSQKYKEGKYIEMSHMVKDNGWD |
| | TRTRPLEQKLISEEDLAANDILDYKDDDDKV |
| Tag: | C-Myc/DDK |
| Predicted MW: | 14.1 kDa |
| Concentration: | >0.05 µg/µL as determined by microplate BCA method |
| Purity: | > 80% as determined by SDS-PAGE and Coomassie blue staining |
| Buffer: | 25 mM Tris-HCl, 100 mM glycine, pH 7.3, 10% glycerol |
| Preparation: | Recombinant protein was captured through anti-DDK affinity column followed by conventional chromatography steps. |
| Note: | For testing in cell culture applications, please filter before use. Note that you may experience some loss of protein during the filtration process. |
| Storage: | Store at -80°C. |
| Stability: | Stable for 12 months from the date of receipt of the product under proper storage and handling conditions. Avoid repeated freeze-thaw cycles. |
| RefSeq: | NP_659445 |
| Locus ID: | 219539 |
| UniProt ID: | Q96NS1 , A0A024R4Y8 |
| RefSeq Size: | 1731 |
| Cytogenetics: | 11q12.1 |



[View online »](#)

RefSeq ORF: 381

Product images:



Coomassie blue staining of purified YPEL4 protein (Cat# [TP311147]). The protein was produced from HEK293T cells transfected with YPEL4 cDNA clone (Cat# [RC211147]) using MegaTran 2.0 (Cat# [TT210002]).