

Product datasheet for TP311142M

RPS6KC1 (NM_012424) Human Recombinant Protein

Product data:

Product Type:	Recombinant Proteins
Description:	Recombinant protein of human ribosomal protein S6 kinase, 52kDa, polypeptide 1 (RPS6KC1), transcript variant 1, 100 µg
Species:	Human
Expression Host:	HEK293T
Expression cDNA Clone or AA Sequence:	>RC211142 protein sequence Red=Cloning site Green=Tags(s)

MTSYRERSADLARFYTVTEPQRHPRGYTVYKVTARVVSRRNPEDVQEIIVWKRYSDFKKLHKELWQIHKN
LFRHSELFPFAKIVFGRFDETVIEERRQCAEDLLQFSANIPALYNSKQLEDFFKGGIINDSSELIGPA
EAHSDSLIDTFPECSTEGFSSDSLVLSTVDVDSLAELEDDGMASNQNSPIRTFGLNLSSDSSALGAVASD
SEQSKTEEERESRSLFPGSLKPKLGKRDYLEKAGELIKLALKKEEEDDYEAASDFYRKGVDLLLEGVQGE
SSPTRREAVKRRTAEYLMRAEISSLYGKPLDDVVSQPPGSLSSRPLWNLRSPAELKAFRVLGVIDKVL
LVMDTRTEQTFILKGLRKSSEYSRNRKTIIPRCVPMVCLHKEYIIEESVFLVLQHAEGGKLWSYISKFL
NRSPEESFDIKEVKKPTLAKVHLQQPTSSPDSSSFESRGSDDGSMMLKALPLKSSLTPSSQDDSNQEDDG
QDSSPKWPDSSGSSSEEECTTSYLTLCNEYGQEKIEPGSLNEEPPFMKTEGNGVDTKAIKSFPAPLAADSDS
PSTQLRAHELKFFPNDDPEAVSSPRTSDLSRSKNSPMEFFRIDSKDSASELLGLDFGEKLYSLKSEPLK
PFFTLPDGDASRSFNTSESKVEFKAQDTISRGSDDSVVISFKDAAFDDVSGTDEGRPDLLVNLPGELE
STREAAAMGPTKFTQTNIGIENKLEAPDVLCLRLSTEQCQAHEEKGIEELSDPSGPKSYSITEKHQAQ
EDPRMLFVAAVDHSSSGDMSLLPSSDPKFQGLGVVESAVTANNTESLFRICSPLSGANIYASTDTLKT
EEVLLFTDQTDLLAKEEPTSLFQRDSETKGESGLVLEGDKEIHQIFEDLDKLLALASRFYIPEGCIQRWA
AEMVVALDALHREGIVCRDLNPNNILLNDRGHIQLTYFSRWSEVEDSCDSDAIERMYCAPEVGAITEETE
ACDWWSLGAVLFELLTGKTLVECHPAGINTHTTLNMPECVSEEARSLIQQLQFNPLERLGAGVAGVEDI
KSHPPFTVPDWAELMR

TRTRPLEQKLISEEDLAANDILDYKDDDDKV

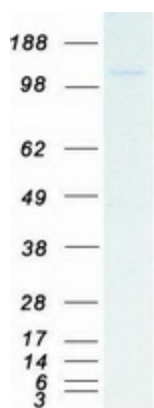
Tag:	C-Myc/DDK
Predicted MW:	118.5 kDa
Concentration:	>0.05 µg/µL as determined by microplate BCA method
Purity:	> 80% as determined by SDS-PAGE and Coomassie blue staining
Buffer:	25 mM Tris-HCl, 100 mM glycine, pH 7.3, 10% glycerol



[View online »](#)

Preparation:	Recombinant protein was captured through anti-DDK affinity column followed by conventional chromatography steps.
Note:	For testing in cell culture applications, please filter before use. Note that you may experience some loss of protein during the filtration process.
Storage:	Store at -80°C.
Stability:	Stable for 12 months from the date of receipt of the product under proper storage and handling conditions. Avoid repeated freeze-thaw cycles.
RefSeq:	NP_036556
Locus ID:	26750
UniProt ID:	Q96S38
RefSeq Size:	4219
Cytogenetics:	1q32.3
RefSeq ORF:	3198
Synonyms:	humS6PKh1; RPK118; RSKL1; S6K-delta-1; S6PKh1
Summary:	Sphingosine kinase catalyzes the formation of sphingosine 1 phosphate, a lipid cellular messenger. The protein encoded by this gene can bind to sphingosine kinase and to phosphatidylinositol 3-phosphate, suggesting a role in sphingosine 1 phosphate signaling. The encoded protein can also bind to peroxiredoxin-3 and may help transport it to mitochondria. [provided by RefSeq, Mar 2017]
Protein Families:	Druggable Genome, Protein Kinase

Product images:



Coomassie blue staining of purified RPS6KC1 protein (Cat# [TP311142]). The protein was produced from HEK293T cells transfected with RPS6KC1 cDNA clone (Cat# [RC211142]) using MegaTran 2.0 (Cat# [TT210002]).