

Product datasheet for TP311139M

TCEAL2 (NM_080390) Human Recombinant Protein

Product data:

Product Type:	Recombinant Proteins
Description:	Recombinant protein of human transcription elongation factor A (SII)-like 2 (TCEAL2), 100 µg
Species:	Human
Expression Host:	HEK293T
Expression cDNA	>RC211139 protein sequence
Clone or AA Sequence:	Red=Cloning site Green=Tags(s)

MEKLFNENEGMPSNQGKIDNEEQPPHEGKPEVACILEDKKLENEGNTENTGKRVEEPLKDKEKPESAGKA
KGEGKSERKKGKSEMQGGSKTEGKPERGGRAEGEGEPDSEREPESGEPESSETRAAGKRPAEDDIPRKAQR
KTNKGLAQYLKQYKEAIHDMNFSNEDMIREFDNMARVEDKRRKSKQKLGAFLLWQRLQDPFYPRGPREF
RGGCRAPRRDTEIPYV

TRTRPLEQKLISEEDLAANDILDYKDDDDKV

Tag:	C-Myc/DDK
Predicted MW:	25.7 kDa
Concentration:	>0.05 µg/µL as determined by microplate BCA method
Purity:	> 80% as determined by SDS-PAGE and Coomassie blue staining
Buffer:	25 mM Tris-HCl, 100 mM glycine, pH 7.3, 10% glycerol
Preparation:	Recombinant protein was captured through anti-DDK affinity column followed by conventional chromatography steps.
Note:	For testing in cell culture applications, please filter before use. Note that you may experience some loss of protein during the filtration process.
Storage:	Store at -80°C.
Stability:	Stable for 12 months from the date of receipt of the product under proper storage and handling conditions. Avoid repeated freeze-thaw cycles.
RefSeq:	NP_525129
Locus ID:	140597
UniProt ID:	Q9H3H9



[View online >](#)

RefSeq Size: 1123

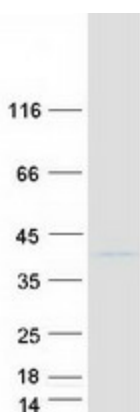
Cytogenetics: Xq22.1

RefSeq ORF: 681

Synonyms: my048; MY0876G05; WEX1

Summary: This gene encodes a member of the transcription elongation factor A (SII)-like (TCEAL) gene family. Members of this family contain TFA domains and may function as nuclear phosphoproteins that modulate transcription in a promoter context-dependent manner. Multiple family members are located on the X chromosome. [provided by RefSeq, Jul 2008]

Product images:



Coomassie blue staining of purified TCEAL2 protein (Cat# [TP311139]). The protein was produced from HEK293T cells transfected with TCEAL2 cDNA clone (Cat# [RC211139]) using MegaTran 2.0 (Cat# [TT210002]).