

## Product datasheet for TP311127L

### gamma Tubulin (TUBG2) (NM\_016437) Human Recombinant Protein

#### Product data:

Product Type:	Recombinant Proteins
Description:	Recombinant protein of human tubulin, gamma 2 (TUBG2), 1 mg
Species:	Human
Expression Host:	HEK293T
Expression cDNA Clone or AA Sequence:	>RC211127 protein sequence Red=Cloning site Green=Tags(s)
	<p>MPREIITLQLGQCGNQIGFEFWKQLCAEHGISPEGIVEEFATEGTDRKDVFFYQADDEHYIPRAVLLDLE            PRVIHSILNSPYAKLYNPENIYLSEHGGGAGNNWASGFSQGEKIHEDIFDIIDREADGSDSLEGFVLCHS            IAGGTGSGLGSYLLERLNDRYPKKLVQTYSVFPYQDEMSDWWWQPYNSLLTLKRLTQNADCVVLDNTAL            NRIATDRLHIQNPSFSQINQLVSTIMSASTTTLRYPGYMNNDLIGLIASLIPTPRLHFLMTGYTPLTTDQ            SVASVRKTTVLDVMRRLQPKNVMVSTGRDRQTNHCYIAILNIIQGEVDPTQVHKSLQRIRERKLANFIP            WGPASIQVALSRKSPYLP SAHRVSGLMANHTSISLFESSCQQFDKLRKRDAFLEQFRKEDMFKDNFDE            MDRSREVVQELIDEYHAATQPDYISWGTQEQ</p> <p>TRTRPLEQKLISEEDLAANDILDYKDDDDKV</p>
Tag:	C-Myc/DDK
Predicted MW:	50.9 kDa
Concentration:	>0.05 µg/µL as determined by microplate BCA method
Purity:	> 80% as determined by SDS-PAGE and Coomassie blue staining
Buffer:	25 mM Tris-HCl, 100 mM glycine, pH 7.3, 10% glycerol
Preparation:	Recombinant protein was captured through anti-DDK affinity column followed by conventional chromatography steps.
Note:	For testing in cell culture applications, please filter before use. Note that you may experience some loss of protein during the filtration process.
Storage:	Store at -80°C.
Stability:	Stable for 12 months from the date of receipt of the product under proper storage and handling conditions. Avoid repeated freeze-thaw cycles.
RefSeq:	<a href="#">NP_057521</a>



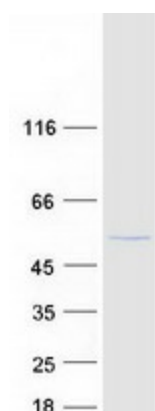
[View online »](#)

Locus ID: 27175  
UniProt ID: [Q9NRH3](#)  
RefSeq Size: 1841  
Cytogenetics: 17q21.2  
RefSeq ORF: 1353

**Summary:** Tubulin is the major constituent of microtubules. The gamma chain is found at microtubule organizing centers (MTOC) such as the spindle poles or the centrosome. Pericentriolar matrix component that regulates alpha/beta chain minus-end nucleation, centrosome duplication and spindle formation (By similarity).[UniProtKB/Swiss-Prot Function]

**Protein Families:** Druggable Genome

### Product images:



Coomassie blue staining of purified TUBG2 protein (Cat# [TP311127]). The protein was produced from HEK293T cells transfected with TUBG2 cDNA clone (Cat# [RC211127]) using MegaTran 2.0 (Cat# [TT210002]).