

## Product datasheet for **TP311125M**

### TEX13A (NM\_031274) Human Recombinant Protein

#### Product data:

Product Type:	Recombinant Proteins
Description:	Recombinant protein of human testis expressed 13A (TEX13A), 100 µg
Species:	Human
Expression Host:	HEK293T
Expression cDNA Clone or AA Sequence:	>RC211125 protein sequence <b>Red</b> =Cloning site <b>Green</b> =Tags(s)

MALRPEDPSSGFRHSNVVAFINEKMARHTKGPEFYLENISLSWEKVEDKLRAILEDSEVPSEVKEACTWG  
SLALGVRFAHRQAQLQRHRVRWLHGFAPLHKSAAQALASDLKLRQEQETERKEAASRLRMAQTSLSVEVQ  
KERDKELVSPHEWEQGAGWPGLATAGGVCTEGAAAAAEEAAGGKGAEEEQRDVEVVAAPVEAM  
APPVEAGAAPMETQFPHVEARAASMETTEKLERILLQLLDADQEKYTYWGQKEGDLRSVETATSYFSGT  
TNPWSRASSEPLPVQLPASYSYSSPFSFSDIPTISPPQATVTAPVPPQLPSDWEAFDTLSWSDGGPH  
RIDHQEHPRDRRYSEPHQQRPPVYRRPGDWDCPWCNAVNFRRDTCFDCGKGIWLQKPH

**TRTRPLEQKLISEEDLAANDILDYKDDDDKV**

Tag:	C-Myc/DDK
Predicted MW:	45.4 kDa
Concentration:	>0.05 µg/µL as determined by microplate BCA method
Purity:	> 80% as determined by SDS-PAGE and Coomassie blue staining
Buffer:	25 mM Tris-HCl, 100 mM glycine, pH 7.3, 10% glycerol
Preparation:	Recombinant protein was captured through anti-DDK affinity column followed by conventional chromatography steps.
Note:	For testing in cell culture applications, please filter before use. Note that you may experience some loss of protein during the filtration process.
Storage:	Store at -80°C.
Stability:	Stable for 12 months from the date of receipt of the product under proper storage and handling conditions. Avoid repeated freeze-thaw cycles.
RefSeq:	<a href="#">NP_112564</a>
Locus ID:	56157



[View online »](#)

UniProt ID: [Q9BXU3](#)

RefSeq Size: 1409

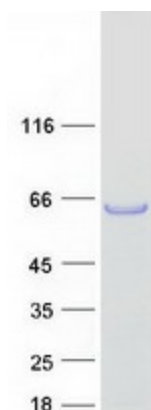
Cytogenetics: Xq22.3

RefSeq ORF: 1227

**Summary:** This gene is similar to a mouse gene that is expressed in the testis. Alternative splicing results in multiple transcript variants. [provided by RefSeq, Mar 2014]

**Protein Families:** Druggable Genome

### Product images:



Coomassie blue staining of purified TEX13A protein (Cat# [TP311125]). The protein was produced from HEK293T cells transfected with TEX13A cDNA clone (Cat# [RC211125]) using MegaTran 2.0 (Cat# [TT210002]).