

Product datasheet for **TP311114**

Apolipoprotein L 1 (APOL1) (NM_003661) Human Recombinant Protein

Product data:

Product Type: Recombinant Proteins

Description: Recombinant protein of human apolipoprotein L, 1 (APOL1), transcript variant 1, 20 µg

Species: Human

Expression Host: HEK293T

Expression cDNA Clone or AA Sequence: >Peptide sequence encoded by RC211114
Blue=ORF Red=Cloning site Green=Tag(s)

MEGAALLRVSVLCIWMSALFLGVGVRAEEAGARVQQNVPSGTDGDPQSKPLGDWAAGTMDPESSIFIE
DAIKYFKEKYSTQNLLLLLDNEAWNGFVAAAELPRNEADELRKALDNLARQMIMKDKNWHDKGQQYRN
WFLKEFPRLKSKLEDNIRRLRALADGVQKVHKGTTIANVVSGLSISGILTLVGMGLAPFTEGGSLVL
LEPGMELGITAALTGITSSTMDYGKKWWTQAQAHDLVIKSLDKLKEVREFLGENISNFLSLAGNTYQLT
RGIGKDIALRRARANLQSVPHASASRPRVTEPISAESGEQVERVNEPSILEMSRGVKLTDVAPVSFFL
VLDVVYLVYESKHLHEGAKSETAEELKKVAQELEEKLNILNNNYKILQADQEL
TRTRPLEQKLISEEDLAANDILDYKDDDDKV

Recombinant protein using RC211114 also available, [TP311114M](#)

Tag: C-Myc/DDK

Predicted MW: 41.1 kDa

Concentration: >0.05 µg/µL as determined by microplate BCA method

Purity: > 80% as determined by SDS-PAGE and Coomassie blue staining

Buffer: 25 mM Tris-HCl, 100 mM glycine, pH 7.3, 10% glycerol

Preparation: Recombinant protein was captured through anti-DDK affinity column followed by conventional chromatography steps.

Note: For testing in cell culture applications, please filter before use. Note that you may experience some loss of protein during the filtration process.

Storage: Store at -80°C.

Stability: Stable for 12 months from the date of receipt of the product under proper storage and handling conditions. Avoid repeated freeze-thaw cycles.

RefSeq: [NP_003652](#)



[View online »](#)

Locus ID: 8542

UniProt ID: [O14791](#), [Q2KHO6](#)

RefSeq Size: 2856

Cytogenetics: 22q12.3

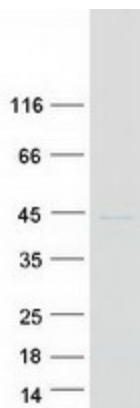
RefSeq ORF: 1194

Synonyms: APO-L; APOL; APOL-I; FSGS4

Summary: This gene encodes a secreted high density lipoprotein which binds to apolipoprotein A-I. Apolipoprotein A-I is a relatively abundant plasma protein and is the major apoprotein of HDL. It is involved in the formation of most cholesteryl esters in plasma and also promotes efflux of cholesterol from cells. This apolipoprotein L family member may play a role in lipid exchange and transport throughout the body, as well as in reverse cholesterol transport from peripheral cells to the liver. Several different transcript variants encoding different isoforms have been found for this gene. [provided by RefSeq, Nov 2008]

Protein Families: Secreted Protein, Transmembrane

Product images:



Coomassie blue staining of purified APOL1 protein (Cat# TP311114). The protein was produced from HEK293T cells transfected with APOL1 cDNA clone (Cat# [RC211114]) using MegaTran 2.0 (Cat# [TT210002]).