

Product datasheet for TP311092

SUMF1 (NM_182760) Human Recombinant Protein

Product data:

Product Type: Recombinant Proteins

Description: Recombinant protein of human sulfatase modifying factor 1 (SUMF1), 20 µg

Species: Human

Expression Host: HEK293T

Expression cDNA >RC211092 protein sequence

Clone or AA Red=Cloning site Green=Tags(s)

Sequence:

MAAPALGLVCGRCPELGLVLLLLLLLLLLCGAAGSQEAGTGAGAGSLAGSCGCGTPQRPGAHGSSAAAHRY
SREANAPGPVPPERQLAHSKMVPIAGVFTMGTDPPQIKQDGEAPARRVTIDAFYMDAYEVSNTFEKFKV
NSTGYL TEAEKFGDSFVFEGMLSEQVKTNIQQAVAAAPWWLPVKGANWRHPEGPDSTILHRPDHPVLHVS
WNDAYAYCTWAGKRLPTEAEWEYSCRGLHNRLFPGWGNLQPKGQHYANIWQGEFPVTNTGEDGFQGTAP
VDAFPNGYGLYNIVGNAWEWTSDDWWTVHHSVEETLNPKGPPSGKDRVKKGGSYMCHRSYCYRYRCAARS
QNTPDSSASNLGFRCAADRLPTMD

TRTRPLEQKLISEEDLAANDILDYKDDDDKV

Tag: C-Myc/DDK

Predicted MW: 37.3 kDa

Concentration: >0.05 µg/µL as determined by microplate BCA method

Purity: > 80% as determined by SDS-PAGE and Coomassie blue staining

Buffer: 25 mM Tris-HCl, 100 mM glycine, pH 7.3, 10% glycerol

Preparation: Recombinant protein was captured through anti-DDK affinity column followed by conventional chromatography steps.

Note: For testing in cell culture applications, please filter before use. Note that you may experience some loss of protein during the filtration process.

Storage: Store at -80°C.

Stability: Stable for 12 months from the date of receipt of the product under proper storage and handling conditions. Avoid repeated freeze-thaw cycles.

RefSeq: [NP_877437](#)

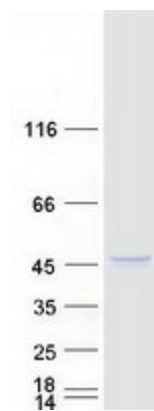
Locus ID: 285362



[View online »](#)

UniProt ID:	Q8NBK3
RefSeq Size:	2179
Cytogenetics:	3p26.1
RefSeq ORF:	1122
Synonyms:	AAPA3037; FGE; UNQ3037
Summary:	This gene encodes an enzyme that catalyzes the hydrolysis of sulfate esters by oxidizing a cysteine residue in the substrate sulfatase to an active site 3-oxoalanine residue, which is also known as C-alpha-formylglycine. Mutations in this gene cause multiple sulfatase deficiency, a lysosomal storage disorder. Alternative splicing results in multiple transcript variants. [provided by RefSeq, Sep 2009]

Product images:



Coomassie blue staining of purified SUMF1 protein (Cat# TP311092). The protein was produced from HEK293T cells transfected with SUMF1 cDNA clone (Cat# [RC211092]) using MegaTran 2.0 (Cat# [TT210002]).