

Product datasheet for **TP311049L**

Importin4 (IPO4) (NM_024658) Human Recombinant Protein

Product data:

Product Type: Recombinant Proteins
Description: Recombinant protein of human importin 4 (IPO4), 1 mg
Species: Human
Expression Host: HEK293T
Expression cDNA Clone or AA Sequence: >RC211049 protein sequence
Red=Cloning site Green=Tags(s)

MESAGLEQLLRELLLPDTERIRRATEQLQIVLRAPAALPALCDLLASAADPQIRQFAAVLTRRRNLNTRWR
 RLAAEQRESLKSILITALQRETEHCVSLSLAQLSATIFRKEGLEAWPQLLQLLQHSTHSPHSPEREMGLL
 LLSVVVTSRPEAFQPHHRELLRLLNETLGEVGSPLLGYSLRSLTMMAPYLSTEDVPLARMLVPKLIMAM
 QTLPIDEAKACEALEDELLESEVPVITPYLSEVLTFCLEVARVALGNAIRILCCLTFLVKVSK
 ALLKNRLLPPLLHTLFPVIAAEPPLGQDPEDQDSEEEELIELMGETPKHFAVQVVDMLALHLPPEKLC
 PQLMPMLEEARSESPYQRKAGLLVLAVLSGAGDHIRQRLPPLLQIVCKGLEDPSSQVVRNAALFALGQ
 FSENLQPHISSYSREVMPLLLAYLKSVPGLGTHHAKACYALENFVENLGPVKVQPYLPELMCMLQLLRN
 PSSPRAKELAVSALGAIATAAQASLLPYFPAIMEHLREFLLTGREDLQPVQIQSLETGLVLARAVGEMR
 PLAECCQLGLGLCDQVDDPDLRRTYSLFAALSGLMGEGLAPHLEQITLMLLSLRSTEGIVPQYDGS
 SFLLFDESDEGEEELMDEDVEEEDDSEISGYSVENAFFDEKEDTCAAVGEISVNTSVAFLPYMESVFE
 EVFKLLECPHLNVRKAAHEALGQFCCALHKACQSCPSEPNTAALQAALARVPSYMQAVNRERERQVMA
 VLEALTGVLRSCTLTLPKPPGRLAELCGVVKAVLQRKTACQDTDEEEEDDDQAEYDAMLLEHAGEAIP
 ALAAAAGGDSFAPFFAGFLPLLVCKTKQGCTVAEKSFVAVGTLAETIQGLGAASAQFVSRLPVLSTAQE
 ADPEVRSNAIFGMGVLAEHGGHPAQEHFPKLLGLLFLLARERHDRVDRNICGALARLLMASPTRKPEPQ
 VLAALLHALPLKEDLEEWVTIGRLFSFLYQSSPDQVIDVAPELLRICSLILADNKIPDPTKAALLLLTF
 LAKQHTDSFQAALGSLPVDKAQELQAVLGLS

TRTRPLEQKLISEEDLAANDILDYKDDDDKV

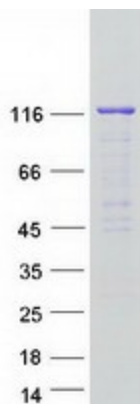
Tag: C-Myc/DDK
Predicted MW: 118.5 kDa
Concentration: >0.05 µg/µL as determined by microplate BCA method
Purity: > 80% as determined by SDS-PAGE and Coomassie blue staining
Buffer: 25 mM Tris-HCl, 100 mM glycine, pH 7.3, 10% glycerol



[View online »](#)

Preparation:	Recombinant protein was captured through anti-DDK affinity column followed by conventional chromatography steps.
Note:	For testing in cell culture applications, please filter before use. Note that you may experience some loss of protein during the filtration process.
Storage:	Store at -80°C.
Stability:	Stable for 12 months from the date of receipt of the product under proper storage and handling conditions. Avoid repeated freeze-thaw cycles.
RefSeq:	NP_078934
Locus ID:	79711
UniProt ID:	Q8TEX9
RefSeq Size:	3606
Cytogenetics:	14q12
RefSeq ORF:	3243
Synonyms:	Imp4
Summary:	Functions in nuclear protein import as nuclear transport receptor. Serves as receptor for nuclear localization signals (NLS) in cargo substrates. Is thought to mediate docking of the importin/substrate complex to the nuclear pore complex (NPC) through binding to nucleoporin and the complex is subsequently translocated through the pore by an energy requiring, Ran-dependent mechanism. At the nucleoplasmic side of the NPC, Ran binds to the importin, the importin/substrate complex dissociates and importin is re-exported from the nucleus to the cytoplasm where GTP hydrolysis releases Ran. The directionality of nuclear import is thought to be conferred by an asymmetric distribution of the GTP- and GDP-bound forms of Ran between the cytoplasm and nucleus (By similarity). Mediates the nuclear import of RPS3A. In vitro, mediates the nuclear import of human cytomegalovirus UL84 by recognizing a non-classical NLS.[UniProtKB/Swiss-Prot Function]
Protein Families:	Druggable Genome

Product images:



Coomassie blue staining of purified IPO4 protein (Cat# [TP311049]). The protein was produced from HEK293T cells transfected with IPO4 cDNA clone (Cat# [RC211049]) using MegaTran 2.0 (Cat# [TT210002]).

