

## Product datasheet for TP311049

### Importin4 (IPO4) (NM\_024658) Human Recombinant Protein

#### Product data:

**Product Type:** Recombinant Proteins  
**Description:** Recombinant protein of human importin 4 (IPO4), 20 µg  
**Species:** Human  
**Expression Host:** HEK293T  
**Expression cDNA Clone or AA Sequence:** >RC211049 protein sequence  
Red=Cloning site Green=Tags(s)

MESAGLEQLLRELLLPDTERIRRATEQLQIVLRAPAALPALCDLLASAADPQIRQFAAVLTRRRNLNTRWR  
 RLAAEQRESLKSILITALQRETEHCVSLSLAQLSATIFRKEGLEAWPQLLQLLQHSTHSPHSPEREMGLL  
 LLSVVVTSRPEAFQPHHRELLRLLNETLGEVGSPLLFYSLRTLTTMAPYLSTEDVPLARMLVPKLIMAM  
 QTLIPIDEAKACEALEDELLESEVPVITPYLSEVLTFCLEVARNVALGNAIRILCCLTFLVKVSK  
 ALLKNRLLPPLLHTLFPIVAAPPPGQLDPEDQDSEEEEEIEIELMGETPKHFAVQVVDMLALHLPPEKLC  
 PQLMPMLEEARSESPYQRKAGLLVLAVLSGDAGDHIRQRLPPLLQIVCKGLEDPSQVVRNAALFALGQ  
 FSENLQPHISSYSREVMPLLLAYLKSVPGLGTHHHLAKACYALENFVENLGPVKVQPYLPELMCMLQLLRN  
 PSSPRAKELAVSALGAIATAAQASLLPYFPAIMEHLREFLLTGREDLQPVQIQSLETGLVLARAVGEMR  
 PLAECCQLGLGLCDQVDDPDLRRCTYSLFAALSGLMGEGLAPHLEQITLMLLSLRSTEGIVPQYDGS  
 SFLLFDESDEGEEEEELMDEDVEEEDDSEISGYSVENAFFDEKEDTCAAVGEISVNTSVAFLPYMESVFE  
 EVFKLLECPHLNVRKAAHEALGQFCCALHKACQSCPSEPNTAALQAALARVPSYMQAVNRERERQVMA  
 VLEALTGVLRSCTLTLKPPGRLAELCGVLKAVLQRKTACQDTDEEEEEEDDDQAEYDAMLLEHAGEAIP  
 ALAAAAGGDSFAPFFAGFLPLLVCKTKQGCTVAEKSFVGTLAETIQGLGAASAQFVSRLLPVLLSTAQE  
 ADPEVRSNAIFGMGVLAEHGGHPAQEHFPKLLGLLFLLARERHDRVDRNICGALARLLMASPTRKPEPQ  
 VLAALLHALPLKEDLEEWVTIGRLFSFLYQSSPDQVIDVAPELLRICSLILADNKIPDPTKAALLLLTF  
 LAKQHTDSFQAALGSLPVDKAQELQAVLGLS

TRTRPLEQKLISEEDLAANDILDYKDDDDKV

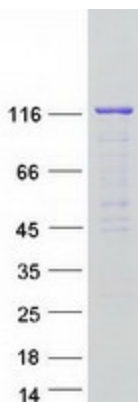
**Tag:** C-Myc/DDK  
**Predicted MW:** 118.5 kDa  
**Concentration:** >0.05 µg/µL as determined by microplate BCA method  
**Purity:** > 80% as determined by SDS-PAGE and Coomassie blue staining  
**Buffer:** 25 mM Tris-HCl, 100 mM glycine, pH 7.3, 10% glycerol



[View online »](#)

<b>Preparation:</b>	Recombinant protein was captured through anti-DDK affinity column followed by conventional chromatography steps.
<b>Note:</b>	For testing in cell culture applications, please filter before use. Note that you may experience some loss of protein during the filtration process.
<b>Storage:</b>	Store at -80°C.
<b>Stability:</b>	Stable for 12 months from the date of receipt of the product under proper storage and handling conditions. Avoid repeated freeze-thaw cycles.
<b>RefSeq:</b>	<a href="#">NP_078934</a>
<b>Locus ID:</b>	79711
<b>UniProt ID:</b>	<a href="#">Q8TEX9</a> , <a href="#">B3KT38</a>
<b>RefSeq Size:</b>	3606
<b>Cytogenetics:</b>	14q12
<b>RefSeq ORF:</b>	3243
<b>Synonyms:</b>	Imp4
<b>Summary:</b>	Functions in nuclear protein import as nuclear transport receptor. Serves as receptor for nuclear localization signals (NLS) in cargo substrates. Is thought to mediate docking of the importin/substrate complex to the nuclear pore complex (NPC) through binding to nucleoporin and the complex is subsequently translocated through the pore by an energy requiring, Ran-dependent mechanism. At the nucleoplasmic side of the NPC, Ran binds to the importin, the importin/substrate complex dissociates and importin is re-exported from the nucleus to the cytoplasm where GTP hydrolysis releases Ran. The directionality of nuclear import is thought to be conferred by an asymmetric distribution of the GTP- and GDP-bound forms of Ran between the cytoplasm and nucleus (By similarity). Mediates the nuclear import of RPS3A. In vitro, mediates the nuclear import of human cytomegalovirus UL84 by recognizing a non-classical NLS.[UniProtKB/Swiss-Prot Function]
<b>Protein Families:</b>	Druggable Genome

### Product images:



Coomassie blue staining of purified IPO4 protein (Cat# TP311049). The protein was produced from HEK293T cells transfected with IPO4 cDNA clone (Cat# [RC211049]) using MegaTran 2.0 (Cat# [TT210002]).

