

## Product datasheet for **TP311037**

### IL36 beta (IL36B) (NM\_173178) Human Recombinant Protein

#### Product data:

Product Type:	Recombinant Proteins
Description:	Recombinant protein of human interleukin 1 family, member 8 (eta) (IL1F8), transcript variant 2, 20 µg
Species:	Human
Expression Host:	HEK293T
Expression cDNA Clone or AA Sequence:	>RC211037 protein sequence <b>Red</b> =Cloning site <b>Green</b> =Tags(s)

MNPQREAAPKSYAIRDSRQMWWVLSGNSLIAAPLSRSIKPVTLHLIACRDTEFSDKEKGNMVYLGIKGKD  
LCLFCAEIQ GKPTLQLKEKNIMDLVYEKKAQKPFLFFHNKEGSTSVFQSVSYPGWFIATSTTSGQPIFLT  
KERGITNNTNFYLD SVE

**TRTRPLEQKLISEEDLAANDILDYKDDDDKV**

Tag:	C-Myc/DDK
Predicted MW:	17.5 kDa
Concentration:	>0.05 µg/µL as determined by microplate BCA method
Purity:	> 80% as determined by SDS-PAGE and Coomassie blue staining
Buffer:	25 mM Tris-HCl, 100 mM glycine, pH 7.3, 10% glycerol
Preparation:	Recombinant protein was captured through anti-DDK affinity column followed by conventional chromatography steps.
Note:	For testing in cell culture applications, please filter before use. Note that you may experience some loss of protein during the filtration process.
Storage:	Store at -80°C.
Stability:	Stable for 12 months from the date of receipt of the product under proper storage and handling conditions. Avoid repeated freeze-thaw cycles.
RefSeq:	<a href="#">NP_775270</a>
Locus ID:	27177
UniProt ID:	<a href="#">Q9NZH7</a>



[View online »](#)

RefSeq Size: 1068

Cytogenetics: 2q14.1

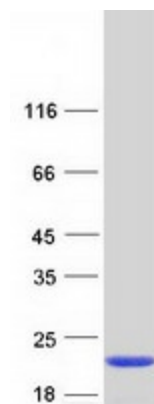
RefSeq ORF: 471

Synonyms: FIL1; FIL1-(ETA); FIL1H; FIL1-(ETA); IL-1F8; IL-1H2; IL1-ETA; IL1F8; IL1H2

**Summary:** The protein encoded by this gene is a member of the interleukin 1 cytokine family. Protein structure modeling indicated that this cytokine may contain a 12-stranded beta-trefoil structure that is conserved between IL1A (IL-A alpha) and IL1B (IL-1 beta). This gene and eight other interleukin 1 family genes form a cytokine gene cluster on chromosome 2. Two alternatively spliced transcript variants encoding distinct isoforms have been reported. [provided by RefSeq, Jul 2008]

**Protein Families:** Druggable Genome, Secreted Protein

### Product images:



Coomassie blue staining of purified IL36B protein (Cat# TP311037). The protein was produced from HEK293T cells transfected with IL36B cDNA clone (Cat# [RC211037]) using MegaTran 2.0 (Cat# [TT210002]).