

## Product datasheet for TP311032M

### SERPINB13 (NM\_012397) Human Recombinant Protein

#### Product data:

**Product Type:** Recombinant Proteins  
**Description:** Recombinant protein of human serpin peptidase inhibitor, clade B (ovalbumin), member 13 (SERPINB13), 100 µg

**Species:** Human

**Expression Host:** HEK293T

**Expression cDNA Clone or AA Sequence:** >RC211032 protein sequence  
 Red=Cloning site Green=Tags(s)

MDSLGA VSTR LGFDL FKELKKTNDGN IFFSPV GILTAIGMVLLGTRGATASQLEEVFHSEKETKSSRIKA  
 EEKEVIENTEAVHQFQKFLTEISKLTDYELNITNRLFGEKTYLFLQKYLDYVEKYYHASLEPVDVFNVA  
 ADESRRKINSWVESKTNEKIKDLFPDGSISSSTKLVLVNMVYFKGQWDREFKENTKEEFWMMNKSTSKS  
 VQMMTQSHSFSFTFLEDLQAKILGIPYKNNDLSMFVLLPNDIDGLEKIIDKISPEKLVWETSPGHMEERK  
 VNLHLPRFEVEDGYDLEAVLAAMGMGDAFSEHKADYSGMSSGSLYAQKFLHSSFVAVTEEGTEAAAAATG  
 IGFTVTSAPGHENVHCNHPFLFFIRHNESNSILFFGRFSSP

TRTRPLEQKLISEEDLAANDILDYKDDDDKV

**Tag:** C-Myc/DDK

**Predicted MW:** 44.1 kDa

**Concentration:** >0.05 µg/µL as determined by microplate BCA method

**Purity:** > 80% as determined by SDS-PAGE and Coomassie blue staining

**Buffer:** 25 mM Tris-HCl, 100 mM glycine, pH 7.3, 10% glycerol

**Preparation:** Recombinant protein was captured through anti-DDK affinity column followed by conventional chromatography steps.

**Note:** For testing in cell culture applications, please filter before use. Note that you may experience some loss of protein during the filtration process.

**Storage:** Store at -80°C.

**Stability:** Stable for 12 months from the date of receipt of the product under proper storage and handling conditions. Avoid repeated freeze-thaw cycles.

**RefSeq:** [NP\\_036529](#)



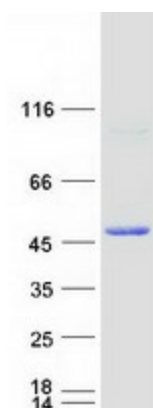
[View online »](#)

Locus ID: 5275  
UniProt ID: [Q9UIV8](#)  
RefSeq Size: 3197  
Cytogenetics: 18q21.33  
RefSeq ORF: 1173  
Synonyms: headpin; HSHUR7SEQ; HUR7; PI13

**Summary:** The protein encoded by this gene is a member of the serpin family of serine protease inhibitors. The encoded protein inhibits the activity of cathepsin K and is itself transcriptionally repressed by RUNX1. This gene is downregulated in many types of cancer. [provided by RefSeq, Jan 2017]

**Protein Families:** Druggable Genome, Transmembrane

### Product images:



Coomassie blue staining of purified SERPINB13 protein (Cat# [TP311032]). The protein was produced from HEK293T cells transfected with SERPINB13 cDNA clone (Cat# [RC211032]) using MegaTran 2.0 (Cat# [TT210002]).