

## Product datasheet for TP311032

### SERPINB13 (NM\_012397) Human Recombinant Protein

#### Product data:

Product Type:	Recombinant Proteins
Description:	Recombinant protein of human serpin peptidase inhibitor, clade B (ovalbumin), member 13 (SERPINB13), 20 µg
Species:	Human
Expression Host:	HEK293T
Expression cDNA Clone or AA Sequence:	>RC211032 protein sequence <b>Red</b> =Cloning site <b>Green</b> =Tags(s)

MDSLGA VSTR LGFDL FKELKKTNDGNIFSPV GILTAIGMVLLGTRGATASQLEEVFHSEKETKSSRIKA  
EEKEVIENTEAVHQFQKFLTEISKL TNDYELNITNRLFGEKTYLFLQKYLDYVEKYYHASLEPVDVNA  
ADESRKKINSWVESKTNEKIKDLFPDGSISSSTKLVLVNMVYFKGQWDREFKENTKEEFW MNKSTSKS  
VQMMTQSHSFSFTFLEDLQAKILGIPYKNNDLSMFVLLPNDIDGLEKIIDKISPEKLVEW TSPGHMEERK  
VNLHLPRFEVEDGYDLEAVLAAMGMGDAFSEHKADYSGMSSGSLY AQKFLHSSFVAVTEEGTEAAAATG  
IGFTVTSAPGHENVHCNHPFLFFIRHNESNSILFFGRFSSP

**TRTRPLEQKLISEEDLAANDILDYKDDDDKV**

Tag:	C-Myc/DDK
Predicted MW:	44.1 kDa
Concentration:	>0.05 µg/µL as determined by microplate BCA method
Purity:	> 80% as determined by SDS-PAGE and Coomassie blue staining
Buffer:	25 mM Tris-HCl, 100 mM glycine, pH 7.3, 10% glycerol
Preparation:	Recombinant protein was captured through anti-DDK affinity column followed by conventional chromatography steps.
Note:	For testing in cell culture applications, please filter before use. Note that you may experience some loss of protein during the filtration process.
Storage:	Store at -80°C.
Stability:	Stable for 12 months from the date of receipt of the product under proper storage and handling conditions. Avoid repeated freeze-thaw cycles.
RefSeq:	<u><a href="#">NP_036529</a></u>



[View online »](#)

Locus ID: 5275

UniProt ID: [Q9UIV8](#)

RefSeq Size: 3197

Cytogenetics: 18q21.33

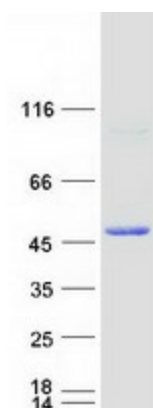
RefSeq ORF: 1173

Synonyms: headpin; HSHUR7SEQ; HUR7; P113

**Summary:** The protein encoded by this gene is a member of the serpin family of serine protease inhibitors. The encoded protein inhibits the activity of cathepsin K and is itself transcriptionally repressed by RUNX1. This gene is downregulated in many types of cancer. [provided by RefSeq, Jan 2017]

**Protein Families:** Druggable Genome, Transmembrane

### Product images:



Coomassie blue staining of purified SERPINB13 protein (Cat# TP311032). The protein was produced from HEK293T cells transfected with SERPINB13 cDNA clone (Cat# [RC211032]) using MegaTran 2.0 (Cat# [TT210002]).