

Product datasheet for TP311030

PTGIS (NM_000961) Human Recombinant Protein

Product data:

| | |
|---------------------------------------|--|
| Product Type: | Recombinant Proteins |
| Description: | Recombinant protein of human prostaglandin I2 (prostacyclin) synthase (PTGIS), 20 µg |
| Species: | Human |
| Expression Host: | HEK293T |
| Expression cDNA Clone or AA Sequence: | >RC211030 protein sequence Red=Cloning site Green=Tags(s) |

MAWAALLGLLAALLLLLLSRRRTRRPGEPLDLGSIPWLGYALDFGKDAASFLTRMKEKHGDIFTILVG
GRYVTVLLDPHSYDAVVWEPRTRLDHFHAYAIFLMERIFDVQLPHYSPSDEKARMKLTLLHRELQALTEAM
YTNLHAVLLGDATEAGSGWHEMGLLDFSYSFLLRAGYLTLYGIEALPRTHESQAQDRVHSADVHFHTFRQL
DRLLPKLARGSLSVGDKDHMCSVKSRWLKLLSPARLARRAHRKWLSEYLLHLEEMGVSEEMQARALVLQ
LWATQGNMGPAAFWLLLFLKNPEALAAVRGELESILWQAEQPVSTTTLPQKVLVDSTPVLDSVLSLSLR
LTAAPFITREVWDLAMPADGREFNLRRGDRLLLFPFLSPQRDPEIYTDPEVFKYNRFLNPDGSEKKDF
YKDGKRLKNYNMPWGAGHNHCLGRSYAVNSIKQFVFLVLVHLDLELINADVEIPEFDLSRYGFGLMQPEH
DVPVRYRIRP

TRTRPLEQKLISEEDLAANDILDYKDDDDKV

| | |
|----------------|--|
| Tag: | C-Myc/DDK |
| Predicted MW: | 56.9 kDa |
| Concentration: | >0.05 µg/µL as determined by microplate BCA method |
| Purity: | > 80% as determined by SDS-PAGE and Coomassie blue staining |
| Buffer: | 25 mM Tris-HCl, 100 mM glycine, pH 7.3, 10% glycerol |
| Bioactivity: | Enzyme substrate (PMID: 28013348) |
| Preparation: | Recombinant protein was captured through anti-DDK affinity column followed by conventional chromatography steps. |
| Note: | For testing in cell culture applications, please filter before use. Note that you may experience some loss of protein during the filtration process. |
| Storage: | Store at -80°C. |



[View online »](#)

Stability: Stable for 12 months from the date of receipt of the product under proper storage and handling conditions. Avoid repeated freeze-thaw cycles.

RefSeq: [NP_000952](#)

Locus ID: 5740

UniProt ID: [Q16647](#)

RefSeq Size: 5603

Cytogenetics: 20q13.13

RefSeq ORF: 1500

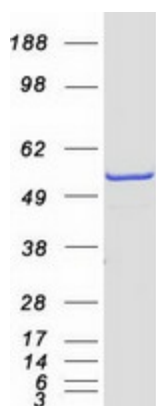
Synonyms: CYP8; CYP8A1; PGIS; PTGI

Summary: This gene encodes a member of the cytochrome P450 superfamily of enzymes. The cytochrome P450 proteins are monooxygenases which catalyze many reactions involved in drug metabolism and synthesis of cholesterol, steroids and other lipids. However, this protein is considered a member of the cytochrome P450 superfamily on the basis of sequence similarity rather than functional similarity. This endoplasmic reticulum membrane protein catalyzes the conversion of prostglandin H2 to prostacyclin (prostaglandin I2), a potent vasodilator and inhibitor of platelet aggregation. An imbalance of prostacyclin and its physiological antagonist thromboxane A2 contribute to the development of myocardial infarction, stroke, and atherosclerosis. [provided by RefSeq, Jul 2008]

Protein Families: Druggable Genome, P450, Transmembrane

Protein Pathways: Arachidonic acid metabolism, Metabolic pathways

Product images:



Coomassie blue staining of purified PTGIS protein (Cat# TP311030). The protein was produced from HEK293T cells transfected with PTGIS cDNA clone (Cat# [RC211030]) using MegaTran 2.0 (Cat# [TT210002]).