

## Product datasheet for **TP311025M**

### **KIRREL 3 (KIRREL3) (NM\_032531) Human Recombinant Protein**

#### Product data:

**Product Type:** Recombinant Proteins

**Description:** Recombinant protein of human kin of IRRE like 3 (Drosophila) (KIRREL3), 100 µg

**Species:** Human

**Expression Host:** HEK293T

**Expression cDNA Clone or AA Sequence:** >RC211025 protein sequence  
**Red**=Cloning site **Green**=Tags(s)

MKPFQLDLLFVCFLLFSQELGLQKRGCCVLGYMAKDKFRRMNQGVYSFSQQPQDQVWVSGQPVTLLC  
A  
IPEYDGFVLWIKDGLALGVGRDLSSYPQYLWGNHLSGEHHLKILRAELQDDAVYECQAIQAAIRSRPAR  
LTVLVPPDDPVILGGPVISLRAGDPLNLTCHADNAKPAASIIWLKGEVINGATYSKTLRLDGKRESIVS  
TLFISPGDVENGQSIVCRATNKAIPGGKETSVTIDIQHPLVNLVSEPQPVLEDNVVTFHCSAKANPAVT  
QYRWAKRGQIIKEASGEVYRTTVDYTFSEPVSCVETNALGSTNLSRTVDVYFGPRMTTEPQSLLVDLGS  
DAIFSCAWTGNPSLTIVWMKRGSGVLSNEKTLTLKSVRQEDAGKYVCRAVPRVGAGEREVTLTVNGPP  
IISSTQTQHALHGEKGQIKCFIRSTPPPDRIAWSKENVLESSTSGRYTVETISTEEGVISTLTISNIVR  
ADFQTIYNCTAWNSFGSDTEIIRLKEQGSEMKSAGLEAESVPMAVIIGVAVGAGVAFLVLMATIVAFCC  
ARSQRNLKGVSAKNDIRVEIVHKEPASGREGEHSTIKQLMMDRGEFQQDSVLKQLEVLKEEKEFQNL  
KDPTNGYYSVNTFKEHHSTPTISLSSCPDLRPAGKQRVPTGMSFTNIYSTLSGQGRLYDYGQRFVLGMG  
SSSIELCEREFQRGSLSDSSFLDTQCDSSVSSSGKQDGYVQFDKASKASASSSHHSQSSSQNSDPSRPL  
QRRMQTHV

**TRTRPLEQKLISEEDLAANDILDYKDDDDKV**

**Tag:** C-Myc/DDK

**Predicted MW:** 85.1 kDa

**Concentration:** >0.05 µg/µL as determined by microplate BCA method

**Purity:** > 80% as determined by SDS-PAGE and Coomassie blue staining

**Buffer:** 25 mM Tris-HCl, 100 mM glycine, pH 7.3, 10% glycerol

**Preparation:** Recombinant protein was captured through anti-DDK affinity column followed by conventional chromatography steps.



[View online »](#)

**Note:** For testing in cell culture applications, please filter before use. Note that you may experience some loss of protein during the filtration process.

**Storage:** Store at -80°C.

**Stability:** Stable for 12 months from the date of receipt of the product under proper storage and handling conditions. Avoid repeated freeze-thaw cycles.

**RefSeq:** [NP\\_115920](#)

**Locus ID:** 84623

**UniProt ID:** [Q8IZU9](#)

**RefSeq Size:** 3794

**Cytogenetics:** 11q24.2

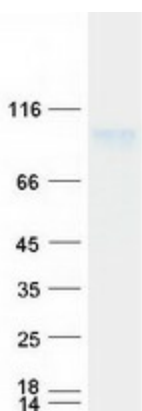
**RefSeq ORF:** 2334

**Synonyms:** KIRRE; MRD4; NEPH2; PRO4502

**Summary:** The protein encoded by this gene is a member of the nephrin-like protein family. These proteins are expressed in fetal and adult brain, and also in podocytes of kidney glomeruli. The cytoplasmic domains of these proteins interact with the C-terminus of podocin, also expressed in the podocytes, cells involved in ensuring size- and charge-selective ultrafiltration. The protein encoded by this gene is a synaptic cell adhesion molecule with multiple extracellular immunoglobulin-like domains and a cytoplasmic PDZ domain-binding motif. Mutations in this gene are associated with several neurological and cognitive disorders. Alternatively spliced transcript variants encoding different isoforms have been found for this gene. [provided by RefSeq, Jul 2017]

**Protein Families:** Transmembrane

## Product images:



Coomassie blue staining of purified KIRREL3 protein (Cat# [TP311025]). The protein was produced from HEK293T cells transfected with KIRREL3 cDNA clone (Cat# [RC211025]) using MegaTran 2.0 (Cat# [TT210002]).