

Product datasheet for TP311021L

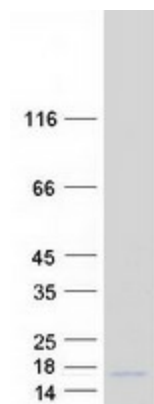
LCE3D (NM_032563) Human Recombinant Protein

Product data:

Product Type:	Recombinant Proteins
Description:	Recombinant protein of human late cornified envelope 3D (LCE3D), 1 mg
Species:	Human
Expression Host:	HEK293T
Expression cDNA Clone or AA Sequence:	>RC211021 protein sequence Red =Cloning site Green =Tags(s) MSCQQNQQQCQPPPKCPSPKCPPKSPVQCLPPASSGCAPSSGVCGPSSEGGCFLNHRRRHRCRRQR PNS CDRGSGQQGGGSGCGHSGGGCC TR TRPLEQKLISEEDLAANDILDYKDDDDKV
Tag:	C-Myc/DDK
Predicted MW:	9.3 kDa
Concentration:	>0.05 µg/µL as determined by microplate BCA method
Purity:	> 80% as determined by SDS-PAGE and Coomassie blue staining
Buffer:	25 mM Tris-HCl, 100 mM glycine, pH 7.3, 10% glycerol
Preparation:	Recombinant protein was captured through anti-DDK affinity column followed by conventional chromatography steps.
Note:	For testing in cell culture applications, please filter before use. Note that you may experience some loss of protein during the filtration process.
Storage:	Store at -80°C.
Stability:	Stable for 12 months from the date of receipt of the product under proper storage and handling conditions. Avoid repeated freeze-thaw cycles.
RefSeq:	NP_115952
Locus ID:	84648
UniProt ID:	Q9BYE3
RefSeq Size:	617


[View online »](#)

Cytogenetics:	1q21.3
RefSeq ORF:	276
Synonyms:	LEP16; SPRL6A; SPRL6B
Summary:	Precursors of the cornified envelope of the stratum corneum.[UniProtKB/Swiss-Prot Function]

Product images:


Coomassie blue staining of purified LCE3D protein (Cat# [TP311021]). The protein was produced from HEK293T cells transfected with LCE3D cDNA clone (Cat# [RC211021]) using MegaTran 2.0 (Cat# [TT210002]).