

## Product datasheet for **TP311021**

### LCE3D (NM\_032563) Human Recombinant Protein

#### Product data:

Product Type:	Recombinant Proteins
Description:	Recombinant protein of human late cornified envelope 3D (LCE3D), 20 µg
Species:	Human
Expression Host:	HEK293T
Expression cDNA Clone or AA Sequence:	>RC211021 protein sequence <b>Red</b> =Cloning site <b>Green</b> =Tags(s)  MSCQQNQQCQPPPKCPSPKCPPKSPVQCLPPASSGCAPSSGVCGPSSEGGCFLNHRRHRRHRCRRRQRPNS CDRGSGQQGGGSGCGHGSGGCC  <b>TRTRPLEQKLISEEDLAANDILDYKDDDDKV</b>
Tag:	C-Myc/DDK
Predicted MW:	9.3 kDa
Concentration:	>0.05 µg/µL as determined by microplate BCA method
Purity:	> 80% as determined by SDS-PAGE and Coomassie blue staining
Buffer:	25 mM Tris-HCl, 100 mM glycine, pH 7.3, 10% glycerol
Preparation:	Recombinant protein was captured through anti-DDK affinity column followed by conventional chromatography steps.
Note:	For testing in cell culture applications, please filter before use. Note that you may experience some loss of protein during the filtration process.
Storage:	Store at -80°C.
Stability:	Stable for 12 months from the date of receipt of the product under proper storage and handling conditions. Avoid repeated freeze-thaw cycles.
RefSeq:	<a href="#">NP_115952</a>
Locus ID:	84648
UniProt ID:	<a href="#">Q9BYE3</a>
RefSeq Size:	617
Cytogenetics:	1q21.3



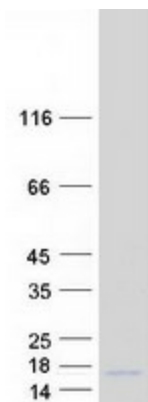
[View online »](#)

RefSeq ORF: 276

Synonyms: LEP16; SPRL6A; SPRL6B

Summary: Precursors of the cornified envelope of the stratum corneum.[UniProtKB/Swiss-Prot Function]

### Product images:



Coomassie blue staining of purified LCE3D protein (Cat# TP311021). The protein was produced from HEK293T cells transfected with LCE3D cDNA clone (Cat# [RC211021]) using MegaTran 2.0 (Cat# [TT210002]).