

Product datasheet for **TP311002L**

MBTD1 (NM_017643) Human Recombinant Protein

Product data:

Product Type:	Recombinant Proteins
Description:	Recombinant protein of human mbt domain containing 1 (MBTD1), 1 mg
Species:	Human
Expression Host:	HEK293T
Expression cDNA Clone or AA Sequence:	>RC211002 representing NM_017643 Red =Cloning site Green =Tags(s)

MFDGYDSCSEDTSSSSSSEEESEEEVAPLPSNLPPIKNNGQVYTPDGKSGMATCEMCGMVGVDAFYSKT
 KRFCVSCSRYSNSKASILARLQGPPTKKAKVLQKQPLVAKLAAYAQYQATLQNQAKTKAAVSMEG
 FSWGNYINSNSFIAAPVTCFKHAPMGTCWGDISENVRVEVPNTDCSLPTKVFWIAGIVKLAGYNALLRYE
 GFENDSGLDFWCNIGSDIHPVGWCAASGKPLVPPRTIQHKYTNWKAFLVKRLTGAKTLPPDFSQKVSSES
 MQYPFKPCMRVEVVDKRHLCTRVAVESVIGGRLRLVYEESDRTDDFWCHMHSPLIHHIGWSRSIGHR
 FKRSITKKQDGHFDTPPHLFAKVKEVDQSGEWFKEGMKLEAIDPLNLSTICVATIRKVLADGFLMIGID
 GSEAADGSDWFCYHATSPSIFPVGFCEINMIELTPPRGYTKLPFKWFDYLRETGSIAAPVKLFNKDVPNH
 GFRVGMKLEAVDLMPERLICVATVTRIIHRLRIHFDGWEEYDQWVDCESPDLYPVGWCQLTGYQLQPP
 ASQSSRENQSASSKQKKKAKSQYKGHKKMTTLQLKEELLDGEDYNFLQGASDQESNGSANFYIKQEP

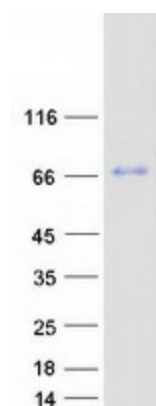
TRTRPLEQKLISEEDLAANDILDYKDDDDKV

Tag:	C-Myc/DDK
Predicted MW:	70.4 kDa
Concentration:	>0.05 µg/µL as determined by microplate BCA method
Purity:	> 80% as determined by SDS-PAGE and Coomassie blue staining
Buffer:	25 mM Tris-HCl, 100 mM glycine, pH 7.3, 10% glycerol
Preparation:	Recombinant protein was captured through anti-DDK affinity column followed by conventional chromatography steps.
Note:	For testing in cell culture applications, please filter before use. Note that you may experience some loss of protein during the filtration process.
Storage:	Store at -80°C.


[View online »](#)

Stability:	Stable for 12 months from the date of receipt of the product under proper storage and handling conditions. Avoid repeated freeze-thaw cycles.
RefSeq:	<u>NP_060113</u>
Locus ID:	54799
UniProt ID:	<u>Q05BQ5</u>
RefSeq Size:	5397
Cytogenetics:	17q21.33
RefSeq ORF:	1884
Synonyms:	SA49P01
Summary:	Putative Polycomb group (PcG) protein. PcG proteins maintain the transcriptionally repressive state of genes, probably via a modification of chromatin, rendering it heritably changed in its expressibility (By similarity). Specifically binds to monomethylated and dimethylated 'Lys-20' on histone H4.[UniProtKB/Swiss-Prot Function]

Product images:



Coomassie blue staining of purified MBTD1 protein (Cat# [TP311002]). The protein was produced from HEK293T cells transfected with MBTD1 cDNA clone (Cat# [RC211002]) using MegaTran 2.0 (Cat# [TT210002]).