

Product datasheet for **TP310968L**

INSL5 (NM_005478) Human Recombinant Protein

Product data:

Product Type:	Recombinant Proteins
Description:	Recombinant protein of human insulin-like 5 (INSL5), 1 mg
Species:	Human
Expression Host:	HEK293T
Expression cDNA Clone or AA Sequence:	>RC210968 protein sequence Red =Cloning site Green =Tags(s)
	MKGSIFTLFLFSVLFAISEVRSKESVRLCGLEYIRTVIYICASSRWRRLHLEGIPQAQQAETGNSFQLPHK REFSEENPAQNLPKVDASGEDRLWGGQMPTEELWKS KHSVMSRQDLQTLCTDGC SMTDLSALC TRTRPLEQKLISEEDLAANDILDYKDDDDKV
Tag:	C-Myc/DDK
Predicted MW:	13.3 kDa
Concentration:	>0.05 µg/µL as determined by microplate BCA method
Purity:	> 80% as determined by SDS-PAGE and Coomassie blue staining
Buffer:	25 mM Tris-HCl, 100 mM glycine, pH 7.3, 10% glycerol
Preparation:	Recombinant protein was captured through anti-DDK affinity column followed by conventional chromatography steps.
Note:	For testing in cell culture applications, please filter before use. Note that you may experience some loss of protein during the filtration process.
Storage:	Store at -80°C.
Stability:	Stable for 12 months from the date of receipt of the product under proper storage and handling conditions. Avoid repeated freeze-thaw cycles.
RefSeq:	NP_005469
Locus ID:	10022
UniProt ID:	Q9Y5Q6
RefSeq Size:	718
Cytogenetics:	1p31.3


[View online »](#)

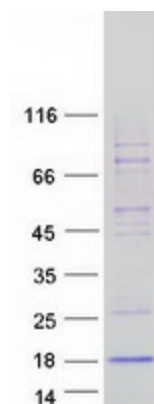
RefSeq ORF: 405

Synonyms: PRO182; UNQ156

Summary: The protein encoded by this gene contains a classical signature of the insulin superfamily and is highly similar to relaxin 3 (RLN3/INSL7). [provided by RefSeq, Jul 2008]

Protein Families: Secreted Protein

Product images:



Coomassie blue staining of purified INSL5 protein (Cat# [TP310968]). The protein was produced from HEK293T cells transfected with INSL5 cDNA clone (Cat# [RC210968]) using MegaTran 2.0 (Cat# [TT210002]).