

Product datasheet for **TP310968**

INSL5 (NM_005478) Human Recombinant Protein

Product data:

Product Type: Recombinant Proteins

Description: Recombinant protein of human insulin-like 5 (INSL5), 20 µg

Species: Human

Expression Host: HEK293T

Expression cDNA Clone
or AA Sequence: >RC210968 protein sequence
Red=Cloning site **Green**=Tags(s)

MKGSIFTLFLFSVLFALSEVRSKESVRLCGLEYIRTVIYICASSRWRRHLEGIPQAQQAETGNSFQLPHK
REFSEENPAQNLPKVDASGEDRLWGGQMPTEELWKSCKHSMRQDLQTLCTDGCMTDLSALC

TRTRPLEQKLISEEDLAANDILDYKDDDDKV

Tag: C-Myc/DDK

Predicted MW: 13.3 kDa

Concentration: >0.05 µg/µL as determined by microplate BCA method

Purity: > 80% as determined by SDS-PAGE and Coomassie blue staining

Buffer: 25 mM Tris-HCl, 100 mM glycine, pH 7.3, 10% glycerol

Preparation: Recombinant protein was captured through anti-DDK affinity column followed by conventional chromatography steps.

Note: For testing in cell culture applications, please filter before use. Note that you may experience some loss of protein during the filtration process.

Storage: Store at -80°C.

Stability: Stable for 12 months from the date of receipt of the product under proper storage and handling conditions. Avoid repeated freeze-thaw cycles.

RefSeq: [NP_005469](#)

Locus ID: 10022

UniProt ID: [Q9Y5Q6](#)

RefSeq Size: 718

Cytogenetics: 1p31.3



[View online »](#)

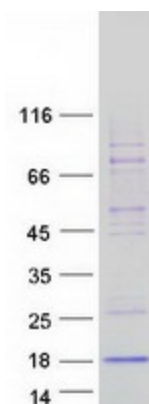
RefSeq ORF: 405

Synonyms: PRO182; UNQ156

Summary: The protein encoded by this gene contains a classical signature of the insulin superfamily and is highly similar to relaxin 3 (RLN3/INSL7). [provided by RefSeq, Jul 2008]

Protein Families: Secreted Protein

Product images:



Coomassie blue staining of purified INSL5 protein (Cat# TP310968). The protein was produced from HEK293T cells transfected with INSL5 cDNA clone (Cat# [RC210968]) using MegaTran 2.0 (Cat# [TT210002]).