

Product datasheet for TP310966M

Semaphorin 7a (SEMA7A) (NM_003612) Human Recombinant Protein

Product data:

Product Type:	Recombinant Proteins
Description:	Recombinant protein of human semaphorin 7A, GPI membrane anchor (John Milton Hagen blood group) (SEMA7A), 100 µg
Species:	Human
Expression Host:	HEK293T
Expression cDNA Clone or AA Sequence:	>RC210966 protein sequence Red=Cloning site Green=Tags(s)

MTPPPPGRAAPSAPRARVPGPPARLGLPLRLRLLLLLLWAAAASAQGHLSGPRIFAVWKGHVQDRVDFG
QTEPHTVLFHEPGSSSVWVGGRGKVFYDFPEGKNASVRTVNIGSTKGSCLDKRDCENYITLLERRSEGL
LACGTNARHPSCWNLVNGTVVPLGEMRGYAPFSPDENSLVLFEGDEVYSTIRKQEYNGKIPRFRIRGES
ELYTSDTVMQNPQFIKATIVHQDQAYDDKIYFFREDNPDKNPEAPLNVSRVAQLCRGDQGGESSLSVSK
WNTFLKAMLVCSAATNKNFNRLQDVLLPDPGQWRDTRVYGVFSNPWNYSAVCVYSLGDIDKVFRTSS
LKGYSLLPNPRPGKCLPDQQPIPTETFQVADRHEVAQRVEPMGPLKTPLFHYSKYHYQKVAVHRMQASH
GETFHVLYLTTDRGTIHKVVEPGEQEHSFAFNIMEIQPFRAAAIQTMSLDAERRKLYVSSQWEVSQVPL
DLCEVYGGGCHGCLMSRDPYCGWDQGRCSISYSSERSVLQINPAEPHKECPNPKPDKAPLQKVSLAPNS
RYYLSCPMSRHTYSWRHKENVEQSCEPHQSPNCILFIENLTAQQYGHYFCEAQEGSYFREAQHWQLL
PEDGIMAELLGHACALASLWLVLPVPLTLGLLVH

TRTRPLEQKLISEEDLAANDILDYKDDDDKV

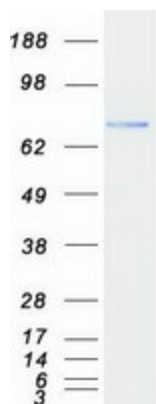
Tag:	C-Myc/DDK
Predicted MW:	70.3 kDa
Concentration:	>0.05 µg/µL as determined by microplate BCA method
Purity:	> 80% as determined by SDS-PAGE and Coomassie blue staining
Buffer:	25 mM Tris-HCl, 100 mM glycine, pH 7.3, 10% glycerol
Preparation:	Recombinant protein was captured through anti-DDK affinity column followed by conventional chromatography steps.
Note:	For testing in cell culture applications, please filter before use. Note that you may experience some loss of protein during the filtration process.
Storage:	Store at -80°C.



[View online »](#)

Stability:	Stable for 12 months from the date of receipt of the product under proper storage and handling conditions. Avoid repeated freeze-thaw cycles.
RefSeq:	NP_003603
Locus ID:	8482
UniProt ID:	O75326 , B3KMH6
RefSeq Size:	3393
Cytogenetics:	15q24.1
RefSeq ORF:	1998
Synonyms:	CD108; CDw108; H-SEMA-K1; H-Sema-L; JMH; SEMAK1; SEMAL
Summary:	This gene encodes a member of the semaphorin family of proteins. The encoded preprotein is proteolytically processed to generate the mature glycosylphosphatidylinositol (GPI)-anchored membrane glycoprotein. The encoded protein is found on activated lymphocytes and erythrocytes and may be involved in immunomodulatory and neuronal processes. The encoded protein carries the John Milton Hagen (JMH) blood group antigens. Mutations in this gene may be associated with reduced bone mineral density (BMD). Alternative splicing results in multiple transcript variants, at least one of which encodes an isoform that is proteolytically processed. [provided by RefSeq, Feb 2016]
Protein Pathways:	Axon guidance

Product images:



Coomassie blue staining of purified SEMA7A protein (Cat# [TP310966]). The protein was produced from HEK293T cells transfected with SEMA7A cDNA clone (Cat# [RC210966]) using MegaTran 2.0 (Cat# [TT210002]).