

Product datasheet for **TP310965L**

ERAS (NM_181532) Human Recombinant Protein

Product data:

Product Type:	Recombinant Proteins
Description:	Recombinant protein of human ES cell expressed Ras (ERAS), 1 mg
Species:	Human
Expression Host:	HEK293T
Expression cDNA Clone or AA Sequence:	>RC210965 protein sequence Red =Cloning site Green =Tags(s)
	 MELPTKPGTFDLGLATWSPSFQGETHRAQARRRDVGRQLPEYKAVVWGASGVGKSALTIQLNHQCFVEDH DPTIQDSYWKELTLDGDCILNVLDTAGQAIHRALRDQCLAVCDGVLGVFALDDPSSLIQLQIQIWATWGP HPAQPLVLVGNKCDLVTTAGDAHAAAAALAHSWGAFHVETS AKTRQGVVEAFSLLVHEIQRVQEAMAKEP MARSCREKTRHQKATCHCGCSVA TRTRPLEQKLISEEDLAANDILDYKDDDDKV
Tag:	C-Myc/DDK
Predicted MW:	25.1 kDa
Concentration:	>0.05 µg/µL as determined by microplate BCA method
Purity:	> 80% as determined by SDS-PAGE and Coomassie blue staining
Buffer:	25 mM Tris-HCl, 100 mM glycine, pH 7.3, 10% glycerol
Preparation:	Recombinant protein was captured through anti-DDK affinity column followed by conventional chromatography steps.
Note:	For testing in cell culture applications, please filter before use. Note that you may experience some loss of protein during the filtration process.
Storage:	Store at -80°C.
Stability:	Stable for 12 months from the date of receipt of the product under proper storage and handling conditions. Avoid repeated freeze-thaw cycles.
RefSeq:	NP_853510
Locus ID:	3266
UniProt ID:	Q7Z444



[View online >](#)

RefSeq Size: 826

Cytogenetics: Xp11.23

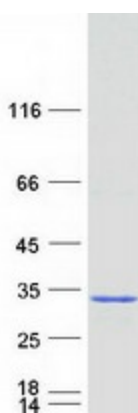
RefSeq ORF: 699

Synonyms: HRAS2; HRASP

Summary: This gene encodes a constitutively active member of the small GTPase Ras protein family. The encoded protein activates the phosphatidylinositol 3-kinase signal transduction pathway in undifferentiated stem cells, but is not expressed in differentiated cells. This gene may be involved in cancer and chemotherapy resistance. [provided by RefSeq, Dec 2012]

Protein Families: Druggable Genome

Product images:



Coomassie blue staining of purified ERAS protein (Cat# [TP310965]). The protein was produced from HEK293T cells transfected with ERAS cDNA clone (Cat# [RC210965]) using MegaTran 2.0 (Cat# [TT210002]).