

## Product datasheet for TP310961L

### CD10 (MME) (NM\_007288) Human Recombinant Protein

#### Product data:

Product Type:	Recombinant Proteins
Description:	Recombinant protein of human membrane metallo-endopeptidase (MME), transcript variant 2a, 1 mg
Species:	Human
Expression Host:	HEK293T
Expression cDNA Clone or AA Sequence:	>RC210961 protein sequence Red=Cloning site Green=Tags(s)

MGKSESQMDITDINTPKPKKKQRWTPLEISLSVLVLLLIIAVTMIALYATYDDGICKSSDCIKSAARLI  
QNM DATTEPCTDFFKYACGGWLKRNVIPETSSRYGNFDILRDELEVVLKDLVLEPKTEDIVAVQKAKALY  
RSCINESAIDSRGGEPLLKLLPDIYGWPVATENWEQKYGASWTAEKAIQAQLNSKYGKKVLINLFGTDDK  
NSVNHVIHIDQPRGLPSRDYECTGIYKEACTAYVDFMISVARLIRQEERLPIDENQLALEMNKVMLE  
KEIANATAKPEDRNDPMLLYNKMTLAQIQNNFSLEINGKPFWSLNFNFTNEIMSTVNSITNEEDVVVYAPE  
YLTKLKPIITKYSARDLQNLMSWRFIMDLVSSLSRTRYKESRNAFRKALYGTTSETATWRRCANVYVNGNME  
NAVGRLYVEAAFAGESKHVVEDLIAQIREVFIQTLDDLTWMDAETKKRAEEKALAIKERIGYPDDIVSND  
NKLNNLEYLELNKEDYFENIIQNLKFSQSKQLKKLREKVDKDEWISGAAVVNAFYSSGRNQIVFPAGIL  
QPPFFSAQSNLNYGGIGMIGHEITHGFDDNGRNFNKGDLVDWWTQQSASNFKEQSQCMVYQYGNFS  
WDLAGGQHLNGINTLGENIADNGGLGQAYRAYQNYIKNGEEKLLPGLDLNHKQLFFLNFAQVWCGTYRP  
EYAVNSIKTDVHSPGNFRIIGTLQNSAEFSEAFHCRKNSYMNPEKKCRVW

TRTRPLEQKLISEEDLAANDILDYKDDDDKV

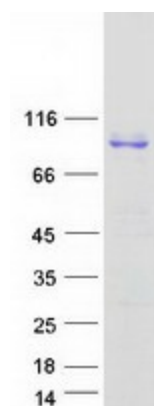
Tag:	C-Myc/DDK
Predicted MW:	85.3 kDa
Concentration:	>0.05 µg/µL as determined by microplate BCA method
Purity:	> 80% as determined by SDS-PAGE and Coomassie blue staining
Buffer:	25 mM Tris-HCl, 100 mM glycine, pH 7.3, 10% glycerol
Preparation:	Recombinant protein was captured through anti-DDK affinity column followed by conventional chromatography steps.
Note:	For testing in cell culture applications, please filter before use. Note that you may experience some loss of protein during the filtration process.



[View online »](#)

<b>Storage:</b>	Store at -80°C.
<b>Stability:</b>	Stable for 12 months from the date of receipt of the product under proper storage and handling conditions. Avoid repeated freeze-thaw cycles.
<b>RefSeq:</b>	<a href="#">NP_009219</a>
<b>Locus ID:</b>	4311
<b>UniProt ID:</b>	<a href="#">P08473</a>
<b>RefSeq Size:</b>	5665
<b>Cytogenetics:</b>	3q25.2
<b>RefSeq ORF:</b>	2250
<b>Synonyms:</b>	CALLA; CD10; CMT2T; NEP; SCA43; SFE
<b>Summary:</b>	The protein encoded by this gene is a type II transmembrane glycoprotein and a common acute lymphocytic leukemia antigen that is an important cell surface marker in the diagnosis of human acute lymphocytic leukemia (ALL). The encoded protein is present on leukemic cells of pre-B phenotype, which represent 85% of cases of ALL. This protein is not restricted to leukemic cells, however, and is found on a variety of normal tissues. The protein is a neutral endopeptidase that cleaves peptides at the amino side of hydrophobic residues and inactivates several peptide hormones including glucagon, enkephalins, substance P, neurotensin, oxytocin, and bradykinin. [provided by RefSeq, Aug 2017]
<b>Protein Families:</b>	Druggable Genome, Protease, Transmembrane
<b>Protein Pathways:</b>	Alzheimer's disease, Hematopoietic cell lineage, Renin-angiotensin system

### Product images:



Coomassie blue staining of purified MME protein (Cat# [TP310961]). The protein was produced from HEK293T cells transfected with MME cDNA clone (Cat# [RC210961]) using MegaTran 2.0 (Cat# [TT210002]).