

Product datasheet for **TP310952L**

WFDC6 (NM_080827) Human Recombinant Protein

Product data:

| | |
|---------------------------------------|--|
| Product Type: | Recombinant Proteins |
| Description: | Recombinant protein of human WAP four-disulfide core domain 6 (WFDC6), 1 mg |
| Species: | Human |
| Expression Host: | HEK293T |
| Expression cDNA Clone or AA Sequence: | >RC210952 protein sequence Red =Cloning site Green =Tags(s) |
| | MGLSGLLPILVPFILLGDIQEPGHAEGILGKPCPKIKVECEVEEIDQCTKPRDCPENMKCCPFSRGKKCL DFRKVSLTLYHKEELE |
| | TR TRPLEQKLISEEDLAANDILDYKDDDDKV |
| Tag: | C-Myc/DDK |
| Predicted MW: | 7 kDa |
| Concentration: | >0.05 µg/µL as determined by microplate BCA method |
| Purity: | > 80% as determined by SDS-PAGE and Coomassie blue staining |
| Buffer: | 25 mM Tris-HCl, 100 mM glycine, pH 7.3, 10% glycerol |
| Preparation: | Recombinant protein was captured through anti-DDK affinity column followed by conventional chromatography steps. |
| Note: | For testing in cell culture applications, please filter before use. Note that you may experience some loss of protein during the filtration process. |
| Storage: | Store at -80°C. |
| Stability: | Stable for 12 months from the date of receipt of the product under proper storage and handling conditions. Avoid repeated freeze-thaw cycles. |
| RefSeq: | NP_543017 |
| Locus ID: | 140870 |
| UniProt ID: | Q9BQY6 , A0A0K0K1K0 |
| RefSeq Size: | 619 |
| Cytogenetics: | 20q13.12 |



[View online »](#)

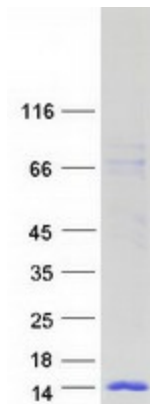
RefSeq ORF: 258

Synonyms: C20orf171; dj461P17.11; HEL-S-295; WAP6

Summary: This gene encodes a member of the WAP-type four-disulfide core (WFDC) domain family. The WFDC domain, or WAP signature motif, contains eight cysteines forming four disulfide bonds at the core of the protein, and functions as a protease inhibitor. Most WFDC gene members are localized to chromosome 20q12-q13 in two clusters: centromeric and telomeric. This gene belongs to the telomeric cluster. Read-through transcription exists between this gene and the upstream SPINLW1 (serine peptidase inhibitor-like, with Kunitz and WAP domains 1) gene. [provided by RefSeq, Nov 2010]

Protein Families: Secreted Protein

Product images:



Coomassie blue staining of purified WFDC6 protein (Cat# [TP310952]). The protein was produced from HEK293T cells transfected with WFDC6 cDNA clone (Cat# [RC210952]) using MegaTran 2.0 (Cat# [TT210002]).