

Product datasheet for **TP310952**

WFDC6 (NM_080827) Human Recombinant Protein

Product data:

Product Type:	Recombinant Proteins
Description:	Recombinant protein of human WAP four-disulfide core domain 6 (WFDC6), 20 µg
Species:	Human
Expression Host:	HEK293T
Expression cDNA Clone or AA Sequence:	>RC210952 protein sequence Red =Cloning site Green =Tags(s)
	MGLSGLLPILVPFILLGDIQEPGHAEGILGKPCPKIKVECEVEEIDQCTKPRDCPENMKCCPFSRGKKCL DFRKVSLTLYHKEELE
	TR TRPLEQKLISEEDLAANDILDYKDDDDKV
Tag:	C-Myc/DDK
Predicted MW:	7 kDa
Concentration:	>0.05 µg/µL as determined by microplate BCA method
Purity:	> 80% as determined by SDS-PAGE and Coomassie blue staining
Buffer:	25 mM Tris-HCl, 100 mM glycine, pH 7.3, 10% glycerol
Preparation:	Recombinant protein was captured through anti-DDK affinity column followed by conventional chromatography steps.
Note:	For testing in cell culture applications, please filter before use. Note that you may experience some loss of protein during the filtration process.
Storage:	Store at -80°C.
Stability:	Stable for 12 months from the date of receipt of the product under proper storage and handling conditions. Avoid repeated freeze-thaw cycles.
RefSeq:	NP_543017
Locus ID:	140870
UniProt ID:	Q9BQY6 , A0A0K0K1K0
RefSeq Size:	619
Cytogenetics:	20q13.12



[View online »](#)

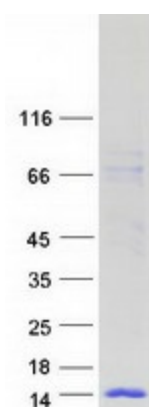
RefSeq ORF: 258

Synonyms: C20orf171; dj461P17.11; HEL-S-295; WAP6

Summary: This gene encodes a member of the WAP-type four-disulfide core (WFDC) domain family. The WFDC domain, or WAP signature motif, contains eight cysteines forming four disulfide bonds at the core of the protein, and functions as a protease inhibitor. Most WFDC gene members are localized to chromosome 20q12-q13 in two clusters: centromeric and telomeric. This gene belongs to the telomeric cluster. Read-through transcription exists between this gene and the upstream SPINLW1 (serine peptidase inhibitor-like, with Kunitz and WAP domains 1) gene. [provided by RefSeq, Nov 2010]

Protein Families: Secreted Protein

Product images:



Coomassie blue staining of purified WFDC6 protein (Cat# TP310952). The protein was produced from HEK293T cells transfected with WFDC6 cDNA clone (Cat# [RC210952]) using MegaTran 2.0 (Cat# [TT210002]).