

## Product datasheet for TP310949L

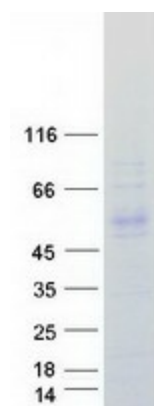
### KLHDC1 (NM\_172193) Human Recombinant Protein

#### Product data:

Product Type:	Recombinant Proteins
Description:	Recombinant protein of human kelch domain containing 1 (KLHDC1), 1 mg
Species:	Human
Expression Host:	HEK293T
Expression cDNA Clone or AA Sequence:	>RC210949 protein sequence <span style="color: red;">Red</span> =Cloning site <span style="color: green;">Green</span> =Tags(s)  MADSQFLFCVAEERSGHCAYVDGNFLYWGGYVSIEDNEVYLPNDEIWTDIDSGSLWRMHLMGELPAS MS GSCGACINGKLYIFGGYDDKGYSNRLYFVNLRTDETIWEKITDFEGQPPTPRDKLSCWVYKDRLIYFG GYGCRRHSELQDCFDVHDASWEEQIFWGWHNDVHIFDTKTQTFQPEIKGGVPPQPRAAHTCAVLGNK GY IFGGRVLQTRMNDLHYLNLDWTWWSGRITINGESPKHRSWHTLTPIADDKFLCGGLSADNIPLSDGWIH NVTTCWKQLTHLPKTRPRLWHTACLGKENEIMVFGGSKDDLALDTGHCDLLIFQTQPYSLLRSLDC IGKNSIMLESQISLLPPKLLQQVLKKITFWAAANHREEQRVQKEETENKYQWISSN  <span style="color: red;">TR</span> <span style="color: green;">TRPLEQKLISEEDLAANDILDYKDDDDKV</span>
Tag:	C-Myc/DDK
Predicted MW:	46.5 kDa
Concentration:	>0.05 µg/µL as determined by microplate BCA method
Purity:	> 80% as determined by SDS-PAGE and Coomassie blue staining
Buffer:	25 mM Tris-HCl, 100 mM glycine, pH 7.3, 10% glycerol
Preparation:	Recombinant protein was captured through anti-DDK affinity column followed by conventional chromatography steps.
Note:	For testing in cell culture applications, please filter before use. Note that you may experience some loss of protein during the filtration process.
Storage:	Store at -80°C.
Stability:	Stable for 12 months from the date of receipt of the product under proper storage and handling conditions. Avoid repeated freeze-thaw cycles.


[View online »](#)

RefSeq: NP\_751943  
 Locus ID: 122773  
 UniProt ID: Q8N7A1  
 RefSeq Size: 2702  
 Cytogenetics: 14q21.3  
 RefSeq ORF: 1218  
 Synonyms: MST025

**Product images:**


Coomassie blue staining of purified KLHDC1 protein (Cat# [TP310949]). The protein was produced from HEK293T cells transfected with KLHDC1 cDNA clone (Cat# [RC210949]) using MegaTran 2.0 (Cat# [TT210002]).