

Product datasheet for **TP310949**

KLHDC1 (NM_172193) Human Recombinant Protein

Product data:

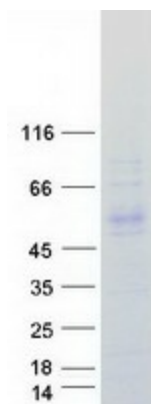
Product Type:	Recombinant Proteins
Description:	Recombinant protein of human kelch domain containing 1 (KLHDC1), 20 µg
Species:	Human
Expression Host:	HEK293T
Expression cDNA Clone or AA Sequence:	>RC210949 protein sequence Red =Cloning site Green =Tags(s)
	MADSQLFCVAEERSGHCAVWDGNFLYVWGGYVSIEDNEVYLPNDEIWYDIDSGLWRMHLMEGELPASMS GSCGACINGKLYIFGGYDDKGYSNRLYFVNLRTDETYIWEKITDFEGQPPTPRDKLSCWVYKDRLIYFG GYGCRRHSELQDCFDVHDASWEEQIFWGWHDVHIFDTKTQTFWFQPEIKGGVPPQPRAAHTCAVLGNKGY IFGGRVLQTRMNDLHYLNLDWTWSGRITINGESPKHRSWHTLPIADDKLFLCGGLSADNIPLSDGWIH NVTTCWVKQLTHLPKTRPRLWHTACLKENEIMVFGGSKDDLALDTGHCNDLLIFQTQPYSLLRSLDC IGKNSIMLESQISLLPPKLLQVLKKITFWAAANHREEQRVQKEETENKYQWISSN
	TRTRPLEQKLISEEDLAANDILDYKDDDDKV
Tag:	C-Myc/DDK
Predicted MW:	46.5 kDa
Concentration:	>0.05 µg/µL as determined by microplate BCA method
Purity:	> 80% as determined by SDS-PAGE and Coomassie blue staining
Buffer:	25 mM Tris-HCl, 100 mM glycine, pH 7.3, 10% glycerol
Preparation:	Recombinant protein was captured through anti-DDK affinity column followed by conventional chromatography steps.
Note:	For testing in cell culture applications, please filter before use. Note that you may experience some loss of protein during the filtration process.
Storage:	Store at -80°C.
Stability:	Stable for 12 months from the date of receipt of the product under proper storage and handling conditions. Avoid repeated freeze-thaw cycles.
RefSeq:	NP_751943
Locus ID:	122773



[View online »](#)

UniProt ID: [Q8N7A1](#)
RefSeq Size: 2702
Cytogenetics: 14q21.3
RefSeq ORF: 1218
Synonyms: MST025

Product images:



Coomassie blue staining of purified KLHDC1 protein (Cat# TP310949). The protein was produced from HEK293T cells transfected with KLHDC1 cDNA clone (Cat# [RC210949]) using MegaTran 2.0 (Cat# [TT210002]).