

Product datasheet for **TP310944**

PBX1 (NM_002585) Human Recombinant Protein

Product data:

Product Type:	Recombinant Proteins
Description:	Recombinant protein of human pre-B-cell leukemia homeobox 1 (PBX1), 20 µg
Species:	Human
Expression Host:	HEK293T
Expression cDNA Clone or AA Sequence:	>RC210944 protein sequence Red =Cloning site Green =Tags(s)
	<p>MDEQPRLMHSAGVGMAGHPGLSQHLQDGAGGTEGEGGRKQDIGDILQQIMTITDQSLDEAQARKHALNC HRMKPALFNVLCIEKEKTVLSIRGAQEEPTDPQLMRLDNMLLAEGVAGPEKGGGSAASGGAG SDNSVEHSDYRAKLSQIRQIYHTELEKYEQACNEFTTHVMNLLREQSRTRPISPKEIERMVSIHRKFSS IQMQLKQSTCEAVMILRSRFLDARRKRRNFNKQATEILNEYFYSHLSNPYPSEEAKEELAKKCGITVSQV SNWFGNKRIYKKNIGKFQEEANIYAAKTAVTATNVAHGSQANSPSTPNSAGSSSFNMSNSGDLFMSV QSLNGDSYQGAQVGANVQSQVDTLRHVISQTGGYSDGLAASQMYSPQGISANGGWQDATTSSVTSPTG PGSVHSDTSN</p> <p>TRTRPLEQKLISEEDLAANDILDYKDDDDKV</p>
Tag:	C-Myc/DDK
Predicted MW:	46.4 kDa
Concentration:	>0.05 µg/µL as determined by microplate BCA method
Purity:	> 80% as determined by SDS-PAGE and Coomassie blue staining
Buffer:	25 mM Tris-HCl, 100 mM glycine, pH 7.3, 10% glycerol
Preparation:	Recombinant protein was captured through anti-DDK affinity column followed by conventional chromatography steps.
Note:	For testing in cell culture applications, please filter before use. Note that you may experience some loss of protein during the filtration process.
Storage:	Store at -80°C.
Stability:	Stable for 12 months from the date of receipt of the product under proper storage and handling conditions. Avoid repeated freeze-thaw cycles.
RefSeq:	<u>NP_002576</u>



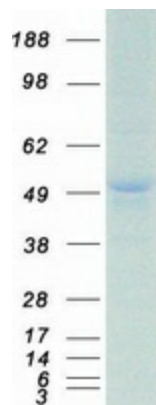
[View online »](#)

Locus ID: 5087
UniProt ID: [P40424](#), [A1MJ41](#), [A8K5V0](#)
RefSeq Size: 6918
Cytogenetics: 1q23.3
RefSeq ORF: 1290
Synonyms: CAKUHEP

Summary: This gene encodes a nuclear protein that belongs to the PBX homeobox family of transcriptional factors. Studies in mice suggest that this gene may be involved in the regulation of osteogenesis and required for skeletal patterning and programming. A chromosomal translocation, t(1;19) involving this gene and TCF3/E2A gene, is associated with pre-B-cell acute lymphoblastic leukemia. The resulting fusion protein, in which the DNA binding domain of E2A is replaced by the DNA binding domain of this protein, transforms cells by constitutively activating transcription of genes regulated by the PBX protein family. Alternatively spliced transcript variants encoding different isoforms have been found for this gene. [provided by RefSeq, Jun 2017]

Protein Families: Druggable Genome, Stem cell - Pluripotency, Transcription Factors

Product images:



Coomassie blue staining of purified PBX1 protein (Cat# TP310944). The protein was produced from HEK293T cells transfected with PBX1 cDNA clone (Cat# [RC210944]) using MegaTran 2.0 (Cat# [TT210002]).