

Product datasheet for **TP310933**

RCSD 1 (RCSD1) (NM_052862) Human Recombinant Protein

Product data:

Product Type: Recombinant Proteins

Description: Recombinant protein of human RCSD domain containing 1 (RCSD1), 20 µg

Species: Human

Expression Host: HEK293T

**Expression cDNA Clone
or AA Sequence:** >RC210933 protein sequence
Red=Cloning site **Green**=Tags(s)

MEERPAETNANVDNSASPSVAQLAGRFREQAAAAKETPASKPTRRKPPCSLPLFPPKVDLQNGEEKSPP
NASHPPKFKVKSSPLIEKLQANLTFDPAALLPGASPKSPGLKAMVSPFHSPSTPSSPGVRSRPSEAEV
PVSFDQPPEGSHLPCYNKVRTRGSIKRRPPSRRFRRSQSDCGELGDFRAVESSQNGAKEEDGDEVLP
SKAPGSPLSSEGAAGEGVRTLGPAEKPLRRSPSRTEKQEEDRATEEAKNGEKARRSSEEVDGQHPAQEE
VPESPQTSQPEAENRCGSPREEKPAGEEAEMEKEATEVKGERVQNEEVGPEHDSQETKKLEEGA
AVKETPH
SPPGGVKGGDVPKQEKQEGAVLEPGCSPQTGPAQLETSSEVQSEPAVPKPEDDTPVQDTKM

TRTRPLEQKLISEEDLAANDILDYKDDDDKV

Tag: C-Myc/DDK

Predicted MW: 44.3 kDa

Concentration: >0.05 µg/µL as determined by microplate BCA method

Purity: > 80% as determined by SDS-PAGE and Coomassie blue staining

Buffer: 25 mM Tris-HCl, 100 mM glycine, pH 7.3, 10% glycerol

Preparation: Recombinant protein was captured through anti-DDK affinity column followed by conventional chromatography steps.

Note: For testing in cell culture applications, please filter before use. Note that you may experience some loss of protein during the filtration process.

Storage: Store at -80°C.

Stability: Stable for 12 months from the date of receipt of the product under proper storage and handling conditions. Avoid repeated freeze-thaw cycles.

RefSeq: [NP_443094](#)

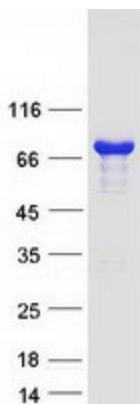
Locus ID: 92241



[View online »](#)

UniProt ID:	Q6JBY9
RefSeq Size:	3012
Cytogenetics:	1q24.2
RefSeq ORF:	1248
Synonyms:	CAPZIP; MK2S4
Summary:	Stress-induced phosphorylation of CAPZIP may regulate the ability of F-actin-capping protein to remodel actin filament assembly.[UniProtKB/Swiss-Prot Function]

Product images:



Coomassie blue staining of purified RCSD1 protein (Cat# TP310933). The protein was produced from HEK293T cells transfected with RCSD1 cDNA clone (Cat# [RC210933]) using MegaTran 2.0 (Cat# [TT210002]).