

Product datasheet for **TP310932M**

EP4 (PTGER4) (NM_000958) Human Recombinant Protein

Product data:

Product Type:	Recombinant Proteins
Description:	Recombinant protein of human prostaglandin E receptor 4 (subtype EP4) (PTGER4), 100 µg
Species:	Human
Expression Host:	HEK293T
Expression cDNA Clone or AA Sequence:	>RC210932 protein sequence Red =Cloning site Green =Tags(s)
	<p>MSTPGVNSSASLSPDRLNSPVTIPAVMFIFGVGNLVAIWVLCRSRKEQKETTFFYTLVCGLAVTDLLGTL LVSPVTIATYMKGQWPGGQPLCEYSTFILLFFSLGSLIICAMSVERYLAINHAYFYSHYVDKRLAGLTL FAVYASNVLFCALPNMGLGSSRLQYPTDWCFFIDWTTNVTAAHAASYMYAGFSSFLILATVLCNVLVCGAL LRMHRQFMRRTSLGTEQHHAAAAASVASRGHPAASPALPRLSDFRRRRSFRRRIAGAEIQMVILLIATSLV VLICSIPLVVRVFNQLYQPSLEREVSKNPDLQAIRIASVNPILDPWIYILLRKTIVLSKAIEKIKCLFCR IGGSRERSGQHCSQSRTSSAMSGHSRFSISRELKEISSTSQTLLPDLSPDLSENGLGGRNLLPGVPG MGLAQEDTTLRLRISETSDSSQGQDSESVLLVDEAGGSGRAGPAPKGSSLQVTFPSETLNLSEKCI</p> <p>TRTRPLEQKLISEEDLAANDILDYKDDDDKV</p>
Tag:	C-Myc/DDK
Predicted MW:	52.9 kDa
Concentration:	>0.05 µg/µL as determined by microplate BCA method
Purity:	> 80% as determined by SDS-PAGE and Coomassie blue staining
Buffer:	25 mM Tris-HCl, 100 mM glycine, pH 7.3, 10% glycerol
Preparation:	Recombinant protein was captured through anti-DDK affinity column followed by conventional chromatography steps.
Note:	For testing in cell culture applications, please filter before use. Note that you may experience some loss of protein during the filtration process.
Storage:	Store at -80°C.
Stability:	Stable for 12 months from the date of receipt of the product under proper storage and handling conditions. Avoid repeated freeze-thaw cycles.
RefSeq:	<u>NP_000949</u>



[View online »](#)

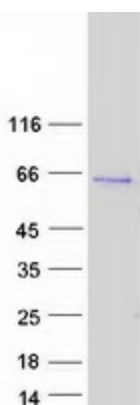
Locus ID: 5734
UniProt ID: [P35408](#), [A0PJF5](#)
RefSeq Size: 3432
Cytogenetics: 5p13.1
RefSeq ORF: 1464
Synonyms: EP4; EP4R

Summary: The protein encoded by this gene is a member of the G-protein coupled receptor family. This protein is one of four receptors identified for prostaglandin E2 (PGE2). This receptor can activate T-cell factor signaling. It has been shown to mediate PGE2 induced expression of early growth response 1 (EGR1), regulate the level and stability of cyclooxygenase-2 mRNA, and lead to the phosphorylation of glycogen synthase kinase-3. Knockout studies in mice suggest that this receptor may be involved in the neonatal adaptation of circulatory system, osteoporosis, as well as initiation of skin immune responses. [provided by RefSeq, Jul 2008]

Protein Families: Druggable Genome, GPCR, Transmembrane

Protein Pathways: Neuroactive ligand-receptor interaction

Product images:



Coomassie blue staining of purified PTGER4 protein (Cat# [TP310932]). The protein was produced from HEK293T cells transfected with PTGER4 cDNA clone (Cat# [RC210932]) using MegaTran 2.0 (Cat# [TT210002]).