

Product datasheet for **TP310926M**

TSGA2 (RSPH1) (NM_080860) Human Recombinant Protein

Product data:

Product Type:	Recombinant Proteins
Description:	Recombinant protein of human radial spoke head 1 homolog (Chlamydomonas) (RSPH1), 100 µg
Species:	Human
Expression Host:	HEK293T
Expression cDNA Clone or AA Sequence:	>RC210926 protein sequence Red =Cloning site Green =Tags(s)

MSDLGSEEEEGENDIGEYEGGRNEAGERHGRGRARLPNGDTYEGSYEFGKRHGQGIYKFKNGARYIGE
YVRNKKHGQGTFIYPDGSRYEGEWANDLRHGHGVYYYINNDTYTGEWFAHQRHGQGTLYAETGSKYVGT
WVNGQQEGTAELIHLNHRYPQKFLNKNPVGPGKYVFDVGEQHGGEYRLTDMERGESEEEEEELVTVPKWK
ATQITELALWPTLPKKPTSTDGPGQDAPGAESAGEPGEEAQALLEGFEGEMDMRPGDEDADVLREESRE
YDQEEFRYDMDEGNINSEEEETRQSDLQD

TRTRPLEQKLISEEDLAANDILDYKDDDDKV

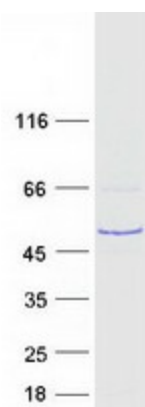
Tag:	C-Myc/DDK
Predicted MW:	34.9 kDa
Concentration:	>0.05 µg/µL as determined by microplate BCA method
Purity:	> 80% as determined by SDS-PAGE and Coomassie blue staining
Buffer:	25 mM Tris-HCl, 100 mM glycine, pH 7.3, 10% glycerol
Preparation:	Recombinant protein was captured through anti-DDK affinity column followed by conventional chromatography steps.
Note:	For testing in cell culture applications, please filter before use. Note that you may experience some loss of protein during the filtration process.
Storage:	Store at -80°C.
Stability:	Stable for 12 months from the date of receipt of the product under proper storage and handling conditions. Avoid repeated freeze-thaw cycles.
RefSeq:	NP_543136
Locus ID:	89765



[View online »](#)

UniProt ID:	Q8WYR4
RefSeq Size:	1445
Cytogenetics:	21q22.3
RefSeq ORF:	927
Synonyms:	CT79; RSP44; RSPH10A; TSA2; TSGA2
Summary:	This gene encodes a male meiotic metaphase chromosome-associated acidic protein. This gene is expressed in tissues with motile cilia or flagella, including the trachea, lungs, airway brushings, and testes. Mutations in this gene result in primary ciliary dyskinesia-24. Alternatively spliced transcript variants encoding different isoforms have been found for this gene. [provided by RefSeq, Sep 2014]

Product images:



Coomassie blue staining of purified RSPH1 protein (Cat# [TP310926]). The protein was produced from HEK293T cells transfected with RSPH1 cDNA clone (Cat# [RC210926]) using MegaTran 2.0 (Cat# [TT210002]).