

## Product datasheet for **TP310926**

### TSGA2 (RSPH1) (NM\_080860) Human Recombinant Protein

#### Product data:

**Product Type:** Recombinant Proteins  
**Description:** Recombinant protein of human radial spoke head 1 homolog (Chlamydomonas) (RSPH1), 20 µg  
**Species:** Human  
**Expression Host:** HEK293T  
**Expression cDNA Clone or AA Sequence:** >RC210926 protein sequence  
**Red**=Cloning site **Green**=Tags(s)

MSDLGSEELSEEEGENDIGEYEGGRNEAGERHGRGRARLPNGDTYEGSYEFGKRHGQGIYKFKNGARYIGE  
YVRNKKHGQGTFIYPDGSRYEGEWANDLRHGHGVYYYINNDTYTGEWFAHQHRHGQGTLYAETGSKYVGT  
WVNGQQEGTAEIHLNHRYQGKFLNKNPVGPGKYVFDVGCEQHGEYRLTDMERGESEEEEEELVTVVPKWK  
ATQITELALWPTLPKPTSTDGPGQDAPGAESAGEPGEEAQALLEGFEGEMDMRPGDEDADVLREESRE  
YDQEEFRYDMDEGNINSEEEETRQSDLQD

**TRTRPLEQKLISEEDLAANDILDYKDDDDKV**

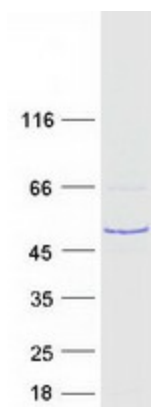
**Tag:** C-Myc/DDK  
**Predicted MW:** 34.9 kDa  
**Concentration:** >0.05 µg/µL as determined by microplate BCA method  
**Purity:** > 80% as determined by SDS-PAGE and Coomassie blue staining  
**Buffer:** 25 mM Tris-HCl, 100 mM glycine, pH 7.3, 10% glycerol  
**Preparation:** Recombinant protein was captured through anti-DDK affinity column followed by conventional chromatography steps.  
**Note:** For testing in cell culture applications, please filter before use. Note that you may experience some loss of protein during the filtration process.  
**Storage:** Store at -80°C.  
**Stability:** Stable for 12 months from the date of receipt of the product under proper storage and handling conditions. Avoid repeated freeze-thaw cycles.  
**RefSeq:** [NP\\_543136](#)  
**Locus ID:** 89765



[View online »](#)

UniProt ID:	<a href="#">Q8WYR4</a>
RefSeq Size:	1445
Cytogenetics:	21q22.3
RefSeq ORF:	927
Synonyms:	CT79; RSP44; RSPH10A; TSA2; TSGA2
Summary:	This gene encodes a male meiotic metaphase chromosome-associated acidic protein. This gene is expressed in tissues with motile cilia or flagella, including the trachea, lungs, airway brushings, and testes. Mutations in this gene result in primary ciliary dyskinesia-24. Alternatively spliced transcript variants encoding different isoforms have been found for this gene. [provided by RefSeq, Sep 2014]

### Product images:



Coomassie blue staining of purified RSPH1 protein (Cat# TP310926). The protein was produced from HEK293T cells transfected with RSPH1 cDNA clone (Cat# [RC210926]) using MegaTran 2.0 (Cat# [TT210002]).