

Product datasheet for **TP310923**

TMED8 (NM_213601) Human Recombinant Protein

Product data:

| | |
|-----------------------|---|
| Product Type: | Recombinant Proteins |
| Description: | Recombinant protein of human transmembrane emp24 protein transport domain containing 8 (TMED8), 20 µg |
| Species: | Human |
| Expression Host: | HEK293T |
| Expression cDNA | >RC210923 protein sequence |
| Clone or AA Sequence: | Red=Cloning site Green=Tags(s) |

MSDLQAAEGPGSWSPTARPGSAGGVGDCQGVESQAAAASENEDLENKDTSLLASATDPEPCSSPHRPQMV
SPVSKDATEDLRKATGPLEAQALVKQDLLPADQAQVLNEMAKYQVPQRSQDIVMIQSEHTGAIDVLSADL
ESADLLGDHRKVSPLMAPPICWTFKVKFKSKLKGKEKNSRLVVKRGEVVTIRVPTHPEGKRVCFEAT
DDYDIGFGVYFDWTPVTSTDITVQVSDSSDDEDEEEEEEEEEIEEPVPAQDVERGSRSSLRGRYGEVMPVY
RRDSHRDVQAGSHDYPGEGIYLLKFDNSYSLLRNKTLFYFHIIYYS

TRTRPLEQKLISEEDLAANDILDYKDDDDKV

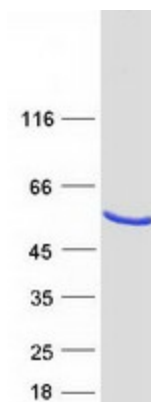
| | |
|----------------|--|
| Tag: | C-Myc/DDK |
| Predicted MW: | 35.6 kDa |
| Concentration: | >0.05 µg/µL as determined by microplate BCA method |
| Purity: | > 80% as determined by SDS-PAGE and Coomassie blue staining |
| Buffer: | 25 mM Tris-HCl, 100 mM glycine, pH 7.3, 10% glycerol |
| Preparation: | Recombinant protein was captured through anti-DDK affinity column followed by conventional chromatography steps. |
| Note: | For testing in cell culture applications, please filter before use. Note that you may experience some loss of protein during the filtration process. |
| Storage: | Store at -80°C. |
| Stability: | Stable for 12 months from the date of receipt of the product under proper storage and handling conditions. Avoid repeated freeze-thaw cycles. |
| RefSeq: | NP_998766 |
| Locus ID: | 283578 |



[View online »](#)

UniProt ID: [Q6PL24](#)
RefSeq Size: 978
Cytogenetics: 14q24.3
RefSeq ORF: 975
Synonyms: FAM15B

Product images:



Coomassie blue staining of purified TMED8 protein (Cat# TP310923). The protein was produced from HEK293T cells transfected with TMED8 cDNA clone (Cat# [RC210923]) using MegaTran 2.0 (Cat# [TT210002]).