

Product datasheet for **TP310909L**

LIN52 (NM_001024674) Human Recombinant Protein

Product data:

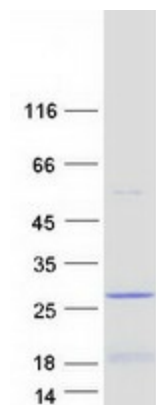
Product Type:	Recombinant Proteins
Description:	Recombinant protein of human lin-52 homolog (C. elegans) (LIN52), 1 mg
Species:	Human
Expression Host:	HEK293T
Expression cDNA Clone or AA Sequence:	>RC210909 protein sequence Red =Cloning site Green =Tags(s)
	MGWKMASPTDGTDLASLLSFEKLDRA SPDLWPEQLPGVAEFAASF KSPITSSPPKWMAEIERDDIDMLK ELGSLTTANLMEKVRGLQNLAYQLGLDESREMTRGKFLNILEKPKK
	TR TRPLE QKLISEEDLA ANDILDYKDDDDKV
Tag:	C-Myc/DDK
Predicted MW:	12.8 kDa
Concentration:	>0.05 µg/µL as determined by microplate BCA method
Purity:	> 80% as determined by SDS-PAGE and Coomassie blue staining
Buffer:	25 mM Tris-HCl, 100 mM glycine, pH 7.3, 10% glycerol
Preparation:	Recombinant protein was captured through anti-DDK affinity column followed by conventional chromatography steps.
Note:	For testing in cell culture applications, please filter before use. Note that you may experience some loss of protein during the filtration process.
Storage:	Store at -80°C.
Stability:	Stable for 12 months from the date of receipt of the product under proper storage and handling conditions. Avoid repeated freeze-thaw cycles.
RefSeq:	<u>NP_001019845</u>
Locus ID:	91750
UniProt ID:	<u>Q52LA3</u>
RefSeq Size:	1798
Cytogenetics:	14q24.3


[View online »](#)

RefSeq ORF: 348

Synonyms: C14orf46; c14_5549

Product images:



Coomassie blue staining of purified LIN52 protein (Cat# [TP310909]). The protein was produced from HEK293T cells transfected with LIN52 cDNA clone (Cat# [RC210909]) using MegaTran 2.0 (Cat# [TT210002]).