

Product datasheet for **TP310905M**

PLA2G12B (NM_032562) Human Recombinant Protein

Product data:

Product Type: Recombinant Proteins

Description: Recombinant protein of human phospholipase A2, group XIIB (PLA2G12B), 100 µg

Species: Human

Expression Host: HEK293T

**Expression cDNA Clone
or AA Sequence:** >RC210905 protein sequence
Red=Cloning site **Green**=Tags(s)

MKLASGFLVLWLSLGGGLAQSDTSPDTEESYSDWGLRHLRGSFESVNSYFDSFLELLGGKNGVCQYRCRY
GKAPMPRPGYKPQEPNGCGSYFLGLKVPESMDLGIPAMTKCCNQLDVCYDTCGANKYRCDKFRWCLHSI
CSDLKRS LGFVSKVEAACDSLVDTVFNTVWTLGCRPFMNSQRAACICAEKEEL

TRTRPLEQKLISEEDLAANDILDYKDDDDKV

Tag: C-Myc/DDK

Predicted MW: 21.5 kDa

Concentration: >0.05 µg/µL as determined by microplate BCA method

Purity: > 80% as determined by SDS-PAGE and Coomassie blue staining

Buffer: 25 mM Tris-HCl, 100 mM glycine, pH 7.3, 10% glycerol

Preparation: Recombinant protein was captured through anti-DDK affinity column followed by conventional chromatography steps.

Note: For testing in cell culture applications, please filter before use. Note that you may experience some loss of protein during the filtration process.

Storage: Store at -80°C.

Stability: Stable for 12 months from the date of receipt of the product under proper storage and handling conditions. Avoid repeated freeze-thaw cycles.

RefSeq: [NP_115951](#)

Locus ID: 84647

UniProt ID: [Q9BX93](#)

RefSeq Size: 1092



[View online »](#)

Cytogenetics: 10q22.1

RefSeq ORF: 585

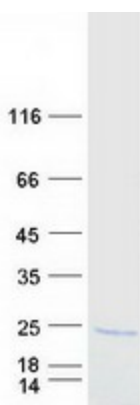
Synonyms: FKSG71; GXIIB; GXIIBsPLA2; PLA2G13; sPLA2-GXIIB

Summary: The protein encoded by this gene belongs to the phospholipase A2 (PLA2) group of enzymes, which function in glycolipid hydrolysis with the release of free fatty acids and lysophospholipids. This family member has altered phospholipid-binding properties and is catalytically inactive. The protein is secreted, and together with microsomal triglyceride transfer protein, it functions to regulate HNF4alpha-induced hepatitis C virus infectivity. The expression of this gene is down-regulated in various tumors, suggesting that it may function as a negative regulator of tumor progression. Alternative splicing of this gene results in multiple transcript variants. [provided by RefSeq, Dec 2015]

Protein Families: Secreted Protein

Protein Pathways: alpha-Linolenic acid metabolism, Arachidonic acid metabolism, Ether lipid metabolism, Fc epsilon RI signaling pathway, Glycerophospholipid metabolism, GnRH signaling pathway, Linoleic acid metabolism, Long-term depression, MAPK signaling pathway, Metabolic pathways, Vascular smooth muscle contraction, VEGF signaling pathway

Product images:



Coomassie blue staining of purified PLA2G12B protein (Cat# [TP310905]). The protein was produced from HEK293T cells transfected with PLA2G12B cDNA clone (Cat# [RC210905]) using MegaTran 2.0 (Cat# [TT210002]).