

Product datasheet for TP310902

IFNA13 (IFNA1) (NM_024013) Human Recombinant Protein

Product data:

Product Type:	Recombinant Proteins
Description:	Recombinant protein of human interferon, alpha 1 (IFNA1), 20 µg
Species:	Human
Expression Host:	HEK293T
Expression cDNA Clone or AA Sequence:	>RC210902 protein sequence Red =Cloning site Green =Tags(s)
	 MASPFALLMALVVL SCKSSCSLGC DLPETHSLDNRR TLMLLAQMSRISPSSCLMDR HDFGFPQE EFDGN Q FQKAP AISVLHEL IQQIFNLFTTKDSSAAWDE D LLDKFC TELYQQ LNDLEACVMQE ERVGETPLMNADSI LAVKKYFRITLYL TEKKYSPCAWEV VRAEIMRSLSLSTNLQER LRRKE TRTRPLEQKLISEEDLAANDILDYKDDDDKV
Tag:	C-Myc/DDK
Predicted MW:	19.3 kDa
Concentration:	>0.05 µg/µL as determined by microplate BCA method
Purity:	> 80% as determined by SDS-PAGE and Coomassie blue staining
Buffer:	25 mM Tris-HCl, 100 mM glycine, pH 7.3, 10% glycerol
Preparation:	Recombinant protein was captured through anti-DDK affinity column followed by conventional chromatography steps.
Note:	For testing in cell culture applications, please filter before use. Note that you may experience some loss of protein during the filtration process.
Storage:	Store at -80°C.
Stability:	Stable for 12 months from the date of receipt of the product under proper storage and handling conditions. Avoid repeated freeze-thaw cycles.
RefSeq:	NP_076918
Locus ID:	3439
UniProt ID:	P01562



[View online »](#)

RefSeq Size: 863

Cytogenetics: 9p21.3

RefSeq ORF: 567

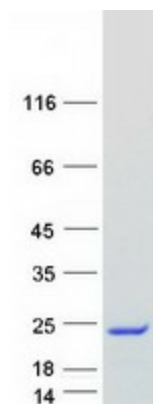
Synonyms: IFL; IFN; IFN-ALPHA; IFN-alphaD; IFNA13; IFNA@; IeIF D

Summary: This gene is a member of the alpha interferon gene cluster on chromosome 9. The encoded cytokine is a member of the type I interferon family that is produced in response to viral infection as a key part of the innate immune response with potent antiviral, antiproliferative and immunomodulatory properties. This cytokine, like other type I interferons, binds a plasma membrane receptor made of IFNAR1 and IFNAR2 that is ubiquitously expressed, and thus is able to act on virtually all body cells. This cytokine is upregulated in preeclamptic placentas and is thought to be a mediator of preeclampsia. [provided by RefSeq, Aug 2020]

Protein Families: Druggable Genome

Protein Pathways: Antigen processing and presentation, Autoimmune thyroid disease, Cytokine-cytokine receptor interaction, Cytosolic DNA-sensing pathway, Jak-STAT signaling pathway, Natural killer cell mediated cytotoxicity, Regulation of autophagy, RIG-I-like receptor signaling pathway, Toll-like receptor signaling pathway

Product images:



Coomassie blue staining of purified IFNA1 protein (Cat# TP310902). The protein was produced from HEK293T cells transfected with IFNA1 cDNA clone (Cat# [RC210902]) using MegaTran 2.0 (Cat# [TT210002]).