

## Product datasheet for **TP310893L**

### GPHA2 (NM\_130769) Human Recombinant Protein

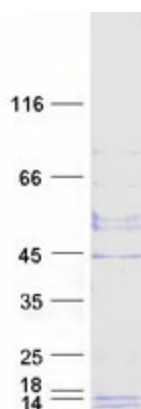
#### Product data:

Product Type:	Recombinant Proteins
Description:	Recombinant protein of human glycoprotein hormone alpha 2 (GPHA2), 1 mg
Species:	Human
Expression Host:	HEK293T
Expression cDNA Clone or AA Sequence:	>RC210893 protein sequence <span style="color: red;">Red</span> =Cloning site <span style="color: green;">Green</span> =Tags(s)  MPMASPTLVLYLLVLAVTEAWGQEAVIPGCHLHPFNVTVRSDRQGTCQGSVHAQACVGHCESSAFPSR Y SVLVASGYRHNITSVSQCCTISGLKKVKVQLQCVGSRREEEIFARACQCDMCRLSRV  <span style="color: red;">TR</span> <span style="color: green;">TRPLEQKLISEEDLAANDILDYKDDDDKV</span>
Tag:	C-Myc/DDK
Predicted MW:	14 kDa
Concentration:	>0.05 µg/µL as determined by microplate BCA method
Purity:	> 80% as determined by SDS-PAGE and Coomassie blue staining
Buffer:	25 mM Tris-HCl, 100 mM glycine, pH 7.3, 10% glycerol
Preparation:	Recombinant protein was captured through anti-DDK affinity column followed by conventional chromatography steps.
Note:	For testing in cell culture applications, please filter before use. Note that you may experience some loss of protein during the filtration process.
Storage:	Store at -80°C.
Stability:	Stable for 12 months from the date of receipt of the product under proper storage and handling conditions. Avoid repeated freeze-thaw cycles.
RefSeq:	<u><a href="#">NP_570125</a></u>
Locus ID:	170589
UniProt ID:	<u><a href="#">Q96T91</a></u>
RefSeq Size:	774


[View online »](#)

Cytogenetics:	11q13.1
RefSeq ORF:	387
Synonyms:	A2; GPA2; ZSIG51
Summary:	GPHA2 is a cystine knot-forming polypeptide and a subunit of the dimeric glycoprotein hormone family (Hsu et al., 2002 [PubMed 12089349]).[supplied by OMIM, Mar 2008]
Protein Families:	Secreted Protein

### Product images:



Coomassie blue staining of purified GPHA2 protein (Cat# [TP310893]). The protein was produced from HEK293T cells transfected with GPHA2 cDNA clone (Cat# [RC210893]) using MegaTran 2.0 (Cat# [TT210002]).