

Product datasheet for **TP310893**

GPHA2 (NM_130769) Human Recombinant Protein

Product data:

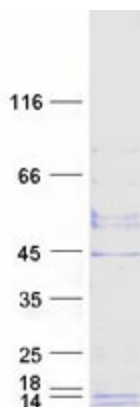
Product Type:	Recombinant Proteins
Description:	Recombinant protein of human glycoprotein hormone alpha 2 (GPHA2), 20 µg
Species:	Human
Expression Host:	HEK293T
Expression cDNA Clone or AA Sequence:	>RC210893 protein sequence Red =Cloning site Green =Tags(s)
	MPMASPQTLVLVLLVLAVTEAWGQEAVIPGCHLHPFNVTVRSDRQGTCQGSVHAQACVGHCESSAFPSR Y SVLVASGYRHNITSVSQCCTISGLKKVKVQLQCVGSRREELEIFTARACQCDMCRLSR
	TRTRPLEQKLISEEDLAANDILDYKDDDDKV
Tag:	C-Myc/DDK
Predicted MW:	14 kDa
Concentration:	>0.05 µg/µL as determined by microplate BCA method
Purity:	> 80% as determined by SDS-PAGE and Coomassie blue staining
Buffer:	25 mM Tris-HCl, 100 mM glycine, pH 7.3, 10% glycerol
Preparation:	Recombinant protein was captured through anti-DDK affinity column followed by conventional chromatography steps.
Note:	For testing in cell culture applications, please filter before use. Note that you may experience some loss of protein during the filtration process.
Storage:	Store at -80°C.
Stability:	Stable for 12 months from the date of receipt of the product under proper storage and handling conditions. Avoid repeated freeze-thaw cycles.
RefSeq:	<u>NP_570125</u>
Locus ID:	170589
UniProt ID:	<u>Q96T91</u>
RefSeq Size:	774



[View online »](#)

Cytogenetics:	11q13.1
RefSeq ORF:	387
Synonyms:	A2; GPA2; ZSIG51
Summary:	GPHA2 is a cystine knot-forming polypeptide and a subunit of the dimeric glycoprotein hormone family (Hsu et al., 2002 [PubMed 12089349]).[supplied by OMIM, Mar 2008]
Protein Families:	Secreted Protein

Product images:



Coomassie blue staining of purified GPHA2 protein (Cat# TP310893). The protein was produced from HEK293T cells transfected with GPHA2 cDNA clone (Cat# [RC210893]) using MegaTran 2.0 (Cat# [TT210002]).