

## Product datasheet for **TP310892**

### PPPDE2 (DES11) (NM\_015704) Human Recombinant Protein

#### Product data:

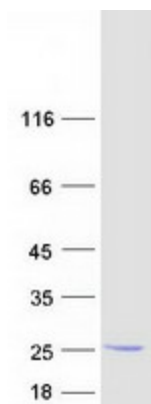
Product Type:	Recombinant Proteins
Description:	Recombinant protein of human PPPDE peptidase domain containing 2 (PPPDE2), 20 µg
Species:	Human
Expression Host:	HEK293T
Expression cDNA Clone or AA Sequence:	>RC210892 protein sequence <b>Red</b> =Cloning site <b>Green</b> =Tags(s)
	MEPPNLYPVKLYVYDLSKGLARRLSPIMLGKQLEGIWHTSIVVHKDEFFFGSGGSISSCPPGGTLLGPPDS VVDVGSTEVTEEIFLEYLSSLGESLFRGEAYNLFEHNCNTFSNEVAQFLTGRKIPSYITDLPSEVLSTPF GQALRPLLDLSIQIPPGSSVGRPNGQS
	<b>TRTRPLEQKLISEEDLAANDILDYKDDDDKV</b>
Tag:	C-Myc/DDK
Predicted MW:	18.1 kDa
Concentration:	>0.05 µg/µL as determined by microplate BCA method
Purity:	> 80% as determined by SDS-PAGE and Coomassie blue staining
Buffer:	25 mM Tris-HCl, 100 mM glycine, pH 7.3, 10% glycerol
Preparation:	Recombinant protein was captured through anti-DDK affinity column followed by conventional chromatography steps.
Note:	For testing in cell culture applications, please filter before use. Note that you may experience some loss of protein during the filtration process.
Storage:	Store at -80°C.
Stability:	Stable for 12 months from the date of receipt of the product under proper storage and handling conditions. Avoid repeated freeze-thaw cycles.
RefSeq:	<a href="#">NP_056519</a>
Locus ID:	27351
UniProt ID:	<a href="#">Q6ICB0</a>
RefSeq Size:	3804



[View online »](#)

Cytogenetics:	22q13.2
RefSeq ORF:	504
Synonyms:	D15Wsu75e; DeSI-1; DESI2; DJ347H13.4; FAM152B; POST; PPPDE2
Summary:	Protease which deconjugates SUMO1, SUMO2 and SUMO3 from some substrate proteins. Has isopeptidase but not SUMO-processing activity (By similarity). Desumoylates ZBTB46 (By similarity). Collaborates with UBQLN4 in the export of ubiquitinated proteins from the nucleus to the cytoplasm (PubMed:29666234).[UniProtKB/Swiss-Prot Function]

### Product images:



Coomassie blue staining of purified DESI1 protein (Cat# TP310892). The protein was produced from HEK293T cells transfected with DESI1 cDNA clone (Cat# [RC210892]) using MegaTran 2.0 (Cat# [TT210002]).