

## Product datasheet for **TP310891L**

### **S100A5 (NM\_002962) Human Recombinant Protein**

#### Product data:

Product Type:	Recombinant Proteins
Description:	Recombinant protein of human S100 calcium binding protein A5 (S100A5), 1 mg
Species:	Human
Expression Host:	HEK293T
Expression cDNA Clone or AA Sequence:	>RC210891 protein sequence <b>Red</b> =Cloning site <b>Green</b> =Tags(s)
	MPAAWILWAHSHSELHTVMETPLEKALTTMVTTFHKYSGREGSKLTLRSELKELIKKELCLGEMKESSI DDLKMSLDKNSDQEIDFKEYSVFLTMLCMAYNDFLEDNK
	<b>TRTRPLEQKLISEEDLAANDILDYKDDDDKV</b>
Tag:	C-Myc/DDK
Predicted MW:	12.6 kDa
Concentration:	>0.05 µg/µL as determined by microplate BCA method
Purity:	> 80% as determined by SDS-PAGE and Coomassie blue staining
Buffer:	25 mM Tris-HCl, 100 mM glycine, pH 7.3, 10% glycerol
Preparation:	Recombinant protein was captured through anti-DDK affinity column followed by conventional chromatography steps.
Note:	For testing in cell culture applications, please filter before use. Note that you may experience some loss of protein during the filtration process.
Storage:	Store at -80°C.
Stability:	Stable for 12 months from the date of receipt of the product under proper storage and handling conditions. Avoid repeated freeze-thaw cycles.
RefSeq:	<a href="#">NP_002953</a>
Locus ID:	6276
UniProt ID:	<a href="#">P33763</a>
RefSeq Size:	710
Cytogenetics:	1q21.3



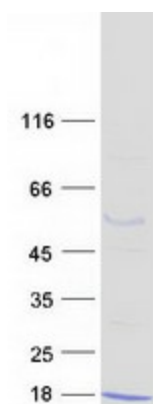
[View online »](#)

RefSeq ORF: 333

Synonyms: S100D

**Summary:** The protein encoded by this gene is a member of the S100 family of proteins containing 2 EF-hand calcium-binding motifs. S100 proteins are localized in the cytoplasm and/or nucleus of a wide range of cells, and involved in the regulation of a number of cellular processes such as cell cycle progression and differentiation. S100 genes include at least 13 members which are located as a cluster on chromosome 1q21. This protein has a Ca<sup>2+</sup> affinity 20- to 100-fold higher than the other S100 proteins studied under identical conditions. This protein also binds Zn<sup>2+</sup> and Cu<sup>2+</sup>, and Cu<sup>2+</sup> strongly which impairs the binding of Ca<sup>2+</sup>. This protein is expressed in very restricted regions of the adult brain. [provided by RefSeq, Jul 2008]

### Product images:



Coomassie blue staining of purified S100A5 protein (Cat# [TP310891]). The protein was produced from HEK293T cells transfected with S100A5 cDNA clone (Cat# [RC210891]) using MegaTran 2.0 (Cat# [TT210002]).