

Product datasheet for **TP310868**

RNF122 (NM_024787) Human Recombinant Protein

Product data:

Product Type: Recombinant Proteins

Description: Recombinant protein of human ring finger protein 122 (RNF122), 20 µg

Species: Human

Expression Host: HEK293T

**Expression cDNA Clone
or AA Sequence:** >RC210868 protein sequence
Red=Cloning site **Green**=Tags(s)

MHPFQWCNGCFCGLGLVSTNKSCSMPPISFQDLPLNIYMVIFGTGIFVFMLSLIFCCYFISKLRNQAQSE
RYGYKEWLKGDAAKLQLYGQTCAVCLEDFKGDDELGVLPQCQHAFHRKCLVKWLEVRCVCPMCNKPIASP
SEATQNI GILLDELV

TRTRPLEQKLISEEDLAANDILDYKDDDDKV

Tag: C-Myc/DDK

Predicted MW: 17.3 kDa

Concentration: >0.05 µg/µL as determined by microplate BCA method

Purity: > 80% as determined by SDS-PAGE and Coomassie blue staining

Buffer: 25 mM Tris-HCl, 100 mM glycine, pH 7.3, 10% glycerol

Preparation: Recombinant protein was captured through anti-DDK affinity column followed by conventional chromatography steps.

Note: For testing in cell culture applications, please filter before use. Note that you may experience some loss of protein during the filtration process.

Storage: Store at -80°C.

Stability: Stable for 12 months from the date of receipt of the product under proper storage and handling conditions. Avoid repeated freeze-thaw cycles.

RefSeq: [NP_079063](#)

Locus ID: 79845

UniProt ID: [Q9H9V4](#)

RefSeq Size: 1872



[View online »](#)

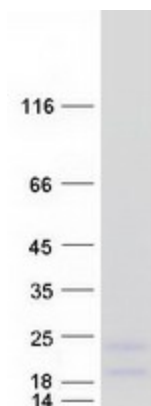
Cytogenetics: 8p12

RefSeq ORF: 465

Summary: The encoded protein contains a RING finger, a motif present in a variety of functionally distinct proteins and known to be involved in protein-protein and protein-DNA interactions. The encoded protein is localized to the endoplasmic reticulum and golgi apparatus, and may be associated with cell viability. [provided by RefSeq, Jul 2013]

Protein Families: Druggable Genome, Transmembrane

Product images:



Coomassie blue staining of purified RNF122 protein (Cat# TP310868). The protein was produced from HEK293T cells transfected with RNF122 cDNA clone (Cat# [RC210868]) using MegaTran 2.0 (Cat# [TT210002]).