

## Product datasheet for **TP310841L**

### TMX3 (NM\_019022) Human Recombinant Protein

#### Product data:

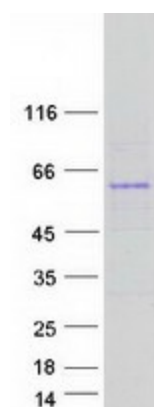
Product Type:	Recombinant Proteins
Description:	Recombinant protein of human thioredoxin-related transmembrane protein 3 (TMX3), 1 mg
Species:	Human
Expression Host:	HEK293T
Expression cDNA Clone or AA Sequence:	>RC210841 protein sequence <b>Red</b> =Cloning site <b>Green</b> =Tags(s)
	<p>MAAWKSWTALRLCATVVVLDMMVCKGFVEDLDESFKENRNDDIWLVDYFAPWCGHCKKLEPIWNEVGL EM KSIGSPVKVGKMDATSYSSIASEFGVGRGYPTIKLLKGDLAYNYRGPRTKDDIIEFAHRVSGALIRPLPSQ QMFEHMQKRHRVFFVYVGESPLKEKYIDAASELIVYTYFFSASEEVPEYVTLKEMPAVLVFKDETYFV YDEYEDGDLSSWINRERFQNYLAMDGFLLYELGDTGKLVALAVIDEKNTSVEHTRLKSIIQEVARDYRDL FHRDFQFGHMDGNDYINTLLMDELTVPVWLNTSNQQYFLLDRQIKNVEDMVQFINNILDGTVEAQGG D SILQRLKRIVFADAKSTIVSIFKSSPLMGCFGLPLGVISIMCYGIYTADTDGGYIEERYEVSKSEENENQ EQIEESKEQQEPSSGGSVPTVQEPKDVLEKKKD</p> <p><b>TRTRPLEQKLISEEDLAANDILDYKDDDDKV</b></p>
Tag:	C-Myc/DDK
Predicted MW:	51.7 kDa
Concentration:	>0.05 µg/µL as determined by microplate BCA method
Purity:	> 80% as determined by SDS-PAGE and Coomassie blue staining
Buffer:	25 mM Tris-HCl, 100 mM glycine, pH 7.3, 10% glycerol
Preparation:	Recombinant protein was captured through anti-DDK affinity column followed by conventional chromatography steps.
Note:	For testing in cell culture applications, please filter before use. Note that you may experience some loss of protein during the filtration process.
Storage:	Store at -80°C.



[View online »](#)

<b>Stability:</b>	Stable for 12 months from the date of receipt of the product under proper storage and handling conditions. Avoid repeated freeze-thaw cycles.
<b>RefSeq:</b>	<a href="#">NP_061895</a>
<b>Locus ID:</b>	54495
<b>UniProt ID:</b>	<a href="#">Q96JJ7</a>
<b>RefSeq Size:</b>	4767
<b>Cytogenetics:</b>	18q22.1
<b>RefSeq ORF:</b>	1362
<b>Synonyms:</b>	PDIA13; TXNDC10
<b>Summary:</b>	This gene encodes a member of the disulfide isomerase (PDI) family of endoplasmic reticulum (ER) proteins that catalyze protein folding and thiol-disulfide interchange reactions. The canonical protein encoded by this gene has an N-terminal ER-signal sequence, a catalytically active thioredoxin domain, one transmembrane domain and a C-terminal ER-retention sequence. This gene is expressed in many tissues but has its highest expression in heart and skeletal muscle. It is expressed in the retinal neuroepithelium and lens epithelium in the developing murine eye and haploinsufficiency of this gene in humans and zebrafish is associated with microphthalmia. Alternative splicing results in multiple transcript variants encoding distinct isoforms. [provided by RefSeq, Apr 2017]
<b>Protein Families:</b>	Druggable Genome, Transmembrane

### Product images:



Coomassie blue staining of purified TMX3 protein (Cat# [TP310841]). The protein was produced from HEK293T cells transfected with TMX3 cDNA clone (Cat# [RC210841]) using MegaTran 2.0 (Cat# [TT210002]).