

Product datasheet for TP310836

Caspr2 (CNTNAP2) (NM_014141) Human Recombinant Protein

Product data:

Product Type: Recombinant Proteins
Description: Recombinant protein of human contactin associated protein-like 2 (CNTNAP2), 20 µg
Species: Human
Expression Host: HEK293T
Expression cDNA Clone or AA Sequence: >RC210836 protein sequence
Red=Cloning site Green=Tags(s)

MQAAPRAGCGAALLLWIVSSCLCRAWTAPSTSQKCDEPLVSGLPHVAFSSSSISGSYSPGYAKINKRGG
 AGGWSPSDSDHYQWLQVDFGNRKQISAIATQGRYSSDWVTQYRMLYSDTGRNWKPYHQDGNIWAFPGNI
 NSDGVVRHELQHPPIARYVRIVPLDWNGEGRIGLRIEVYGCYWADVINFDGHVPLPYRFRNKKMKTLDK
 VIALNFKTSESEGVILHGEGQQGDYITLKKAKLVLSLNLGSLNQLGPIYGHTSVMTGSLDDHHWHSV
 IERQGRSINLTDRSMQHFRTNGEFDYLDLDYEITFGGIPFSGKPPSSSRKNFKGCMESINYNGVNITDL
 ARKKLEPSNVGNLSFSCVEPYTPVFFNATSYLEVPGRNLNQLDFSVSFQFRTWNPNGLLVFSHFADNLG
 NVEIDLTESKVGVHINITQTKMSQIDISSGSLNDGQWHEVRFLAKENFAILTIDGDEASAVRTNSPLQV
 KTGEKYFFGGFLNQMNSSSHSVLQPSFQGCMQLIQVDDQLVNLVEVAQRKPGSFANVSIDMCAIIDRCVP
 NHCEHGGKCSQTWDSFKCTCDETGYSGATCHNSIYEPSCEAYKHLGQTSNYYWIDPDGSGPLGLPKVYCN
 MTEDEKVVIVSHDLQMTPVVGYNPEKYSVTQLVYSASMDQISAITDSAECYQVSYFCKMSRLLNTPD
 GSPYTWWVGKANEKHYWGGSGPGIQKACGIERNCTDPKYCNCADYKQWRKDGFLSYKDHLPLVSVQV
 VVGDTDRQGSEAKLSVGPLRCQGDRNYWNAASFPNPSSYLHFSTFQGETSADISFYFKLTLPWGVFLENM
 GKEDFIKLELKSATEVSFSFDVGNPVEIVRSPTPLNDDQWHRVTAERNVKQASLQVDRLPQQIRKAPT
 EGHTRLELYSQLFVGGAGGQQGFLGCIRSLRMNGVTLDEERAKVTSGFISGCSGHCTSYGTNCENGGKC
 LERYHGYSCDCSNTAYDGTFCNKDVGAFEEGMWLRYNFQAPATNARDSSSRVDNAPDQQNSHPDLAQEE
 IRFSFSTTKAPCILLYISSFTTDFLAVLVKPTGSLQIRYNLGGTREPYNIDVDHRNMANGQPHSVNITRH
 EKTIFLKLHDHYPVSYHLPSSDTLFNSPKSLFLGKVIETGKIDQEIHKYNTPGFTGCLSRVQFNQIAPL
 KAALRQTNASAHVHIQGELVESNCGASPLTLSPMSSATDPWHLHDHLSASADFPYNPGQGQAIRNGVNRN
 SAIIGGVIAVIFTILCTLVFLIRYMFHRKGTYHTNEAKGAESAESAADAAMNNDPNFTETIDESKKEWL
 I

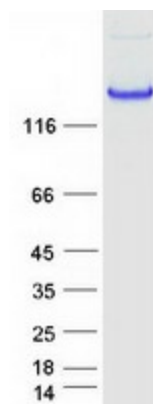
TRTRPLEQKLISEEDLAANDILDYKDDDDKV

Tag: C-Myc/DDK
Predicted MW: 148 kDa



[View online »](#)

Concentration:	>0.05 µg/µL as determined by microplate BCA method
Purity:	> 80% as determined by SDS-PAGE and Coomassie blue staining
Buffer:	25 mM Tris-HCl, 100 mM glycine, pH 7.3, 10% glycerol
Preparation:	Recombinant protein was captured through anti-DDK affinity column followed by conventional chromatography steps.
Note:	For testing in cell culture applications, please filter before use. Note that you may experience some loss of protein during the filtration process.
Storage:	Store at -80°C.
Stability:	Stable for 12 months from the date of receipt of the product under proper storage and handling conditions. Avoid repeated freeze-thaw cycles.
RefSeq:	NP_054860
Locus ID:	26047
UniProt ID:	Q9UHC6 , A0A090N7T7 , B2RCH4
RefSeq Size:	9894
Cytogenetics:	7q35-q36.1
RefSeq ORF:	3993
Synonyms:	AUTS15; CASPR2; CDFE; NRXN4; PTHSL1
Summary:	<p>This gene encodes a member of the neurexin family which functions in the vertebrate nervous system as cell adhesion molecules and receptors. This protein, like other neurexin proteins, contains epidermal growth factor repeats and laminin G domains. In addition, it includes an F5/8 type C domain, discoidin/neuropilin- and fibrinogen-like domains, thrombospondin N-terminal-like domains and a putative PDZ binding site. This protein is localized at the juxtaparanodes of myelinated axons, and mediates interactions between neurons and glia during nervous system development and is also involved in localization of potassium channels within differentiating axons. This gene encompasses almost 1.5% of chromosome 7 and is one of the largest genes in the human genome. It is directly bound and regulated by forkhead box protein P2, a transcription factor related to speech and language development. This gene has been implicated in multiple neurodevelopmental disorders, including Gilles de la Tourette syndrome, schizophrenia, epilepsy, autism, ADHD and intellectual disability. [provided by RefSeq, Jul 2017]</p>
Protein Families:	Druggable Genome, Transmembrane
Protein Pathways:	Cell adhesion molecules (CAMs)

Product images:

Coomassie blue staining of purified CNTNAP2 protein (Cat# TP310836). The protein was produced from HEK293T cells transfected with CNTNAP2 cDNA clone (Cat# [RC210836]) using MegaTran 2.0 (Cat# [TT210002]).