

Product datasheet for **TP310818**

LIF (NM_002309) Human Recombinant Protein

Product data:

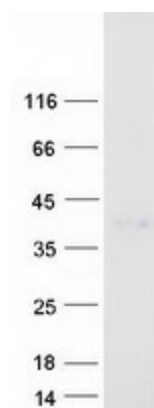
Product Type:	Recombinant Proteins
Description:	Recombinant protein of human leukemia inhibitory factor (cholinergic differentiation factor) (LIF), 20 µg
Species:	Human
Expression Host:	HEK293T
Expression cDNA Clone or AA Sequence:	>RC210818 protein sequence Red =Cloning site Green =Tags(s)
	MKVLAAGVWPLLLVLHWKHGAGSPLPITPVNATCAIRHPCHNNLMNQIRSQLAQLNGSANALFILYYTAQ GEPFPNNLDKLCGPNVTDFFPFHANGTEKAKLVELYRIVVYLGTS LGNITRDQKILNPSALSLSKLNAT ADILRGLLSNVLCRLCSKYHVGHVDVTYGPDTSGKDV FQKKKLG CQLLGKYKQIIAVLAQAF
	TR TRPLEQKLISEEDLAANDILDYKDDDDKV
Tag:	C-Myc/DDK
Predicted MW:	19.7 kDa
Concentration:	>0.05 µg/µL as determined by microplate BCA method
Purity:	> 80% as determined by SDS-PAGE and Coomassie blue staining
Buffer:	25 mM Tris-HCl, 100 mM glycine, pH 7.3, 10% glycerol
Preparation:	Recombinant protein was captured through anti-DDK affinity column followed by conventional chromatography steps.
Note:	For testing in cell culture applications, please filter before use. Note that you may experience some loss of protein during the filtration process.
Storage:	Store at -80°C.
Stability:	Stable for 12 months from the date of receipt of the product under proper storage and handling conditions. Avoid repeated freeze-thaw cycles.
RefSeq:	<u>NP_002300</u>
Locus ID:	3976
UniProt ID:	<u>P15018</u>



[View online »](#)

RefSeq Size:	3987
Cytogenetics:	22q12.2
RefSeq ORF:	606
Synonyms:	CDF; DIA; HILDA; MLPLI
Summary:	The protein encoded by this gene is a pleiotropic cytokine with roles in several different systems. It is involved in the induction of hematopoietic differentiation in normal and myeloid leukemia cells, induction of neuronal cell differentiation, regulator of mesenchymal to epithelial conversion during kidney development, and may also have a role in immune tolerance at the maternal-fetal interface. Alternatively spliced transcript variants encoding multiple isoforms have been observed for this gene. [provided by RefSeq, Mar 2012]
Protein Families:	Adult stem cells, Druggable Genome, ES Cell Differentiation/IPS, Secreted Protein
Protein Pathways:	Cytokine-cytokine receptor interaction, Jak-STAT signaling pathway

Product images:



Coomassie blue staining of purified LIF protein (Cat# TP310818). The protein was produced from HEK293T cells transfected with LIF cDNA clone (Cat# [RC210818]) using MegaTran 2.0 (Cat# [TT210002]).