

## Product datasheet for TP310808L

### LILRA1 (NM\_006863) Human Recombinant Protein

#### Product data:

Product Type:	Recombinant Proteins
Description:	Recombinant protein of human leukocyte immunoglobulin-like receptor, subfamily A (with TM domain), member 1 (LILRA1), 1 mg
Species:	Human
Expression Host:	HEK293T
Expression cDNA Clone or AA Sequence:	>RC210808 protein sequence <span style="color: red;">Red</span> =Cloning site <span style="color: green;">Green</span> =Tags(s)  MTPIVTVLICLRLSLGPRTHVQAGTLPKPTLWAEPGSVITQGGSPVTLWCQGILETQEYRLYREKKTAPWI TRIPQEIVKKGQFPIPSITWEHTGRYRCFYGSHTAGWSEPSDPLELVVTGAYIKPTLSALPSPVVTSGGN VTLHCVSQVAFGSFILCKEGEDEHPQCLNSQPRTHGWSRAIFSVGPVSPSRRWSYRCYAYDSNSPHVWSL PSDLLELLVLGVSKKPSLSVQPGPIVAPGESLTLQCVSDVSYDRFVLYKEGERDFLQLPGPQPQAGLSQA NFTLGPVSRSYGGQYRCSGAYNLSSEWSAPSDPLDILIAGQFRGRPFISVHPGPTVASGENVTLLCQSWG PFHTFLLTKAGAADAPLRLRSIHEYPKYQAEFPMSPVTSAHSGTYRCYGSLSNPYLLSHPSDSLELMVS GAAETLSPQNKSDSKAGAANTLSPSQNKTAHPQDVTENLIRMGIAGLVVLVGLILLFEAQHSQRSL  <span style="color: red;">TR</span> <span style="color: green;">TRPLEQKLISEEDLAANDILDYKDDDDKV</span>
Tag:	C-Myc/DDK
Predicted MW:	53.1 kDa
Concentration:	>0.05 µg/µL as determined by microplate BCA method
Purity:	> 80% as determined by SDS-PAGE and Coomassie blue staining
Buffer:	25 mM Tris-HCl, 100 mM glycine, pH 7.3, 10% glycerol
Preparation:	Recombinant protein was captured through anti-DDK affinity column followed by conventional chromatography steps.
Note:	For testing in cell culture applications, please filter before use. Note that you may experience some loss of protein during the filtration process.
Storage:	Store at -80°C.
Stability:	Stable for 12 months from the date of receipt of the product under proper storage and handling conditions. Avoid repeated freeze-thaw cycles.


[View online »](#)

RefSeq: NP\_006854

Locus ID: 11024

UniProt ID: O75019

RefSeq Size: 3288

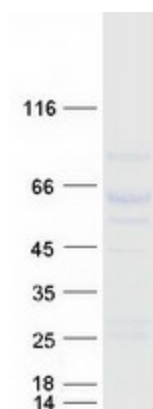
Cytogenetics: 19q13.42

RefSeq ORF: 1467

Synonyms: CD85I; LIR-6; LIR6

**Summary:** This gene encodes an activating member of the leukocyte immunoglobulin-like receptor (LIR) family, which is found in a gene cluster at chromosomal region 19q13.4. The encoded protein is predominantly expressed in B cells, interacts with major histocompatibility complex class I ligands, and contributes to the regulation of immune responses. Alternative splicing results in multiple transcript variants encoding different isoforms. [provided by RefSeq, May 2013]

## Product images:



Coomassie blue staining of purified LILRA1 protein (Cat# [TP310808]). The protein was produced from HEK293T cells transfected with LILRA1 cDNA clone (Cat# [RC210808]) using MegaTran 2.0 (Cat# [TT210002]).