

## Product datasheet for **TP310806M**

### **CPLX2 (NM\_006650) Human Recombinant Protein**

#### **Product data:**

<b>Product Type:</b>	Recombinant Proteins
<b>Description:</b>	Recombinant protein of human complexin 2 (CPLX2), transcript variant 1, 100 µg
<b>Species:</b>	Human
<b>Expression Host:</b>	HEK293T
<b>Expression cDNA Clone or AA Sequence:</b>	>RC210806 protein sequence <b>Red</b> =Cloning site <b>Green</b> =Tags(s)  MDFVMKQALGGATKDMGKMLGGEEKDPDAQKKEEERQEALRQQEEERKAKHARMEAREKVRQQIRDKY GLKKKEEKEAEEKAALQPCGSLTRPKKAIPAGCGDEEEEEESILDTVLKYLPGPLQDMFKK  <b>TRTRPLEQKLISEEDLAANDILDYKDDDDKV</b>
<b>Tag:</b>	C-Myc/DDK
<b>Predicted MW:</b>	15.2 kDa
<b>Concentration:</b>	>0.05 µg/µL as determined by microplate BCA method
<b>Purity:</b>	> 80% as determined by SDS-PAGE and Coomassie blue staining
<b>Buffer:</b>	25 mM Tris-HCl, 100 mM glycine, pH 7.3, 10% glycerol
<b>Preparation:</b>	Recombinant protein was captured through anti-DDK affinity column followed by conventional chromatography steps.
<b>Note:</b>	For testing in cell culture applications, please filter before use. Note that you may experience some loss of protein during the filtration process.
<b>Storage:</b>	Store at -80°C.
<b>Stability:</b>	Stable for 12 months from the date of receipt of the product under proper storage and handling conditions. Avoid repeated freeze-thaw cycles.
<b>RefSeq:</b>	<a href="#">NP_006641</a>
<b>Locus ID:</b>	10814
<b>UniProt ID:</b>	<a href="#">Q6PUV4</a>
<b>RefSeq Size:</b>	4726
<b>Cytogenetics:</b>	5q35.2



[View online »](#)

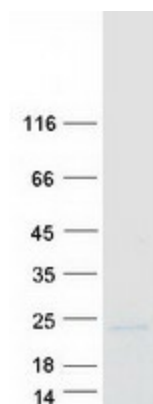
RefSeq ORF: 402

Synonyms: 921-L; CPX-2; CPX2; Hfb1

**Summary:** Proteins encoded by the complexin/synaphin gene family are cytosolic proteins that function in synaptic vesicle exocytosis. These proteins bind syntaxin, part of the SNAP receptor. The protein product of this gene binds to the SNAP receptor complex and disrupts it, allowing transmitter release. Two transcript variants encoding the same protein have been found for this gene. [provided by RefSeq, Jul 2008]

**Protein Families:** Druggable Genome

### Product images:



Coomassie blue staining of purified CPLX2 protein (Cat# [TP310806]). The protein was produced from HEK293T cells transfected with CPLX2 cDNA clone (Cat# [RC210806]) using MegaTran 2.0 (Cat# [TT210002]).