

Product datasheet for **TP310806**

CPLX2 (NM_006650) Human Recombinant Protein

Product data:

Product Type:	Recombinant Proteins
Description:	Recombinant protein of human complexin 2 (CPLX2), transcript variant 1, 20 µg
Species:	Human
Expression Host:	HEK293T
Expression cDNA Clone or AA Sequence:	>RC210806 protein sequence Red =Cloning site Green =Tags(s)
	MDFVMKQALGGATKDMGKMLGGEEKDPDAQKKEEERQEALRQQEEERKAKHARMEAREKVRQQIRDKY GLKKKEEKEAEEKAALQPCGSLTRPKKAIPAGCGDEEEEEESILDTVLKYLPGPLQDMFKK TRTRPLEQKLISEEDLAANDILDYKDDDDKV
Tag:	C-Myc/DDK
Predicted MW:	15.2 kDa
Concentration:	>0.05 µg/µL as determined by microplate BCA method
Purity:	> 80% as determined by SDS-PAGE and Coomassie blue staining
Buffer:	25 mM Tris-HCl, 100 mM glycine, pH 7.3, 10% glycerol
Preparation:	Recombinant protein was captured through anti-DDK affinity column followed by conventional chromatography steps.
Note:	For testing in cell culture applications, please filter before use. Note that you may experience some loss of protein during the filtration process.
Storage:	Store at -80°C.
Stability:	Stable for 12 months from the date of receipt of the product under proper storage and handling conditions. Avoid repeated freeze-thaw cycles.
RefSeq:	NP_006641
Locus ID:	10814
UniProt ID:	Q6PUV4
RefSeq Size:	4726
Cytogenetics:	5q35.2



[View online »](#)

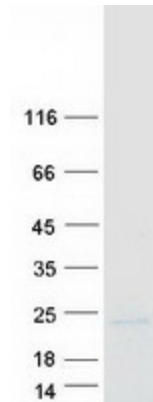
RefSeq ORF: 402

Synonyms: 921-L; CPX-2; CPX2; Hfb1

Summary: Proteins encoded by the complexin/synaphin gene family are cytosolic proteins that function in synaptic vesicle exocytosis. These proteins bind syntaxin, part of the SNAP receptor. The protein product of this gene binds to the SNAP receptor complex and disrupts it, allowing transmitter release. Two transcript variants encoding the same protein have been found for this gene. [provided by RefSeq, Jul 2008]

Protein Families: Druggable Genome

Product images:



Coomassie blue staining of purified CPLX2 protein (Cat# TP310806). The protein was produced from HEK293T cells transfected with CPLX2 cDNA clone (Cat# [RC210806]) using MegaTran 2.0 (Cat# [TT210002]).