

Product datasheet for **TP310805**

WHDC1L1 (NM_001045545) Human Recombinant Protein

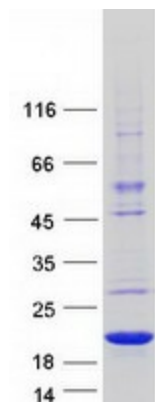
Product data:

Product Type:	Recombinant Proteins
Description:	Recombinant protein of human WAS protein homology region 2 domain containing 1-like 1 (WHDC1L1), 20 µg
Species:	Human
Expression Host:	HEK293T
Expression cDNA Clone or AA Sequence:	>RC210805 representing NM_001045545 Red =Cloning site Green =Tags(s) MEASVPKYKKHLPQLGMQKEMEVDKRFQAAWATAIPRLEKLKMLAQETLQLMPRAKELCLNHKRAEI Q GKMEDLPEQEKININVDELAIQFYEIQLELYEVKFEILKNKEILLTTQLDSLRLIKDEI TR TRPLEQKLISEEDLAANDILDYKDDDDKV
Tag:	C-Myc/DDK
Predicted MW:	15.32
Concentration:	>0.05 µg/µL as determined by microplate BCA method
Purity:	> 80% as determined by SDS-PAGE and Coomassie blue staining
Buffer:	25 mM Tris-HCl, 100 mM glycine, pH 7.3, 10% glycerol
Preparation:	Recombinant protein was captured through anti-DDK affinity column followed by conventional chromatography steps.
Note:	For testing in cell culture applications, please filter before use. Note that you may experience some loss of protein during the filtration process.
Storage:	Store at -80°C.
Stability:	Stable for 12 months from the date of receipt of the product under proper storage and handling conditions. Avoid repeated freeze-thaw cycles.
Locus ID:	339005
RefSeq Size:	3589
Cytogenetics:	15q11.2


[View online »](#)

RefSeq ORF: 390

Product images:



Coomassie blue staining of purified WHDC1L1 protein (Cat# TP310805). The protein was produced from HEK293T cells transfected with WHDC1L1 cDNA clone (Cat# [RC210805]) using MegaTran 2.0 (Cat# [TT210002]).