

Product datasheet for **TP310797L**

Precerebellin (CBLN1) (NM_004352) Human Recombinant Protein

Product data:

Product Type: Recombinant Proteins

Description: Recombinant protein of human cerebellin 1 precursor (CBLN1), 1 mg

Species: Human

Expression Host: HEK293T

Expression cDNA Clone or AA Sequence: >RC210797 protein sequence
Red=Cloning site **Green**=Tags(s)

MLGVLELLLLGAAWLAGPARGQNETEPIVLEGGKCLVWCDSNPTSPTGTALGISVRSKSAKVAFAIRST
NHEPSEMSNRTMIIYFDQVLNIGNNFDSESTFIAPRKGISFNHFVVKVYNRQTIQVSLMLNGWPVIS
AFAGDQDVTREAASNGVLIQMEKGDRAYLKLERGNLMGGWKYSTFSGLVFPL

TRTRPLEQKLISEEDLAANDILDYKDDDDKV

Tag: C-Myc/DDK

Predicted MW: 20.9 kDa

Concentration: >0.05 µg/µL as determined by microplate BCA method

Purity: > 80% as determined by SDS-PAGE and Coomassie blue staining

Buffer: 25 mM Tris-HCl, 100 mM glycine, pH 7.3, 10% glycerol

Preparation: Recombinant protein was captured through anti-DDK affinity column followed by conventional chromatography steps.

Note: For testing in cell culture applications, please filter before use. Note that you may experience some loss of protein during the filtration process.

Storage: Store at -80°C.

Stability: Stable for 12 months from the date of receipt of the product under proper storage and handling conditions. Avoid repeated freeze-thaw cycles.

RefSeq: [NP_004343](#)

Locus ID: 869

UniProt ID: [P23435](#)

RefSeq Size: 2435



[View online »](#)

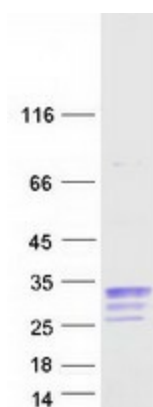
Cytogenetics: 16q12.1

RefSeq ORF: 579

Summary: This gene encodes a cerebellum-specific precursor protein, precerebellin, with similarity to the globular (non-collagen-like) domain of complement component C1qB. Precerebellin is processed to give rise to several derivatives, including the hexadecapeptide, cerebellin, which is highly enriched in postsynaptic structures of Purkinje cells. Cerebellin has also been found in human and rat adrenals, where it has been shown to enhance the secretory activity of this gland. [provided by RefSeq, Aug 2008]

Protein Families: Secreted Protein

Product images:



Coomassie blue staining of purified CBLN1 protein (Cat# [TP310797]). The protein was produced from HEK293T cells transfected with CBLN1 cDNA clone (Cat# [RC210797]) using MegaTran 2.0 (Cat# [TT210002]).