

## Product datasheet for **TP310797**

### Precerebellin (CBLN1) (NM\_004352) Human Recombinant Protein

#### Product data:

**Product Type:** Recombinant Proteins

**Description:** Recombinant protein of human cerebellin 1 precursor (CBLN1), 20 µg

**Species:** Human

**Expression Host:** HEK293T

**Expression cDNA Clone or AA Sequence:** >RC210797 protein sequence  
**Red**=Cloning site **Green**=Tags(s)

MLGVLELLLLGAAWLAGPARGQNETEPIVLEGGKCLVWCDSNPTSPTGTALGISVRSKSAKVAFAIRST  
NHEPSEMSNRTMIIYFDQVLNIGNNFDSESTFIAPRKGISFNHVVVYVNRQTIQVSLMLNGWPVIS  
AFAGDQDVTREASNGVLIQMEKGDRAYLKLERGNLMGGWKYSTFSGFLVFPL

**TRTRPLEQKLISEEDLAANDILDYKDDDDKV**

**Tag:** C-Myc/DDK

**Predicted MW:** 20.9 kDa

**Concentration:** >0.05 µg/µL as determined by microplate BCA method

**Purity:** > 80% as determined by SDS-PAGE and Coomassie blue staining

**Buffer:** 25 mM Tris-HCl, 100 mM glycine, pH 7.3, 10% glycerol

**Preparation:** Recombinant protein was captured through anti-DDK affinity column followed by conventional chromatography steps.

**Note:** For testing in cell culture applications, please filter before use. Note that you may experience some loss of protein during the filtration process.

**Storage:** Store at -80°C.

**Stability:** Stable for 12 months from the date of receipt of the product under proper storage and handling conditions. Avoid repeated freeze-thaw cycles.

**RefSeq:** [NP\\_004343](#)

**Locus ID:** 869

**UniProt ID:** [P23435](#)

**RefSeq Size:** 2435



[View online »](#)

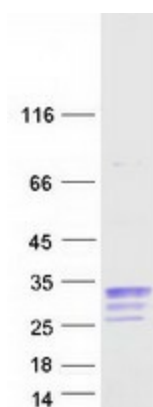
Cytogenetics: 16q12.1

RefSeq ORF: 579

**Summary:** This gene encodes a cerebellum-specific precursor protein, precerebellin, with similarity to the globular (non-collagen-like) domain of complement component C1qB. Precerebellin is processed to give rise to several derivatives, including the hexadecapeptide, cerebellin, which is highly enriched in postsynaptic structures of Purkinje cells. Cerebellin has also been found in human and rat adrenals, where it has been shown to enhance the secretory activity of this gland. [provided by RefSeq, Aug 2008]

**Protein Families:** Secreted Protein

### Product images:



Coomassie blue staining of purified CBLN1 protein (Cat# TP310797). The protein was produced from HEK293T cells transfected with CBLN1 cDNA clone (Cat# [RC210797]) using MegaTran 2.0 (Cat# [TT210002]).